

## FEATURES AND SPECIFICATIONS

### Features and Benefits

- Sizes 6 to 30 circuits
- For 0.30mm thick FFC/FPC

### Reference Information

UL File No.: E29179  
 Packaging: Embossed tape  
 Designed In: Millimeters

### Electrical

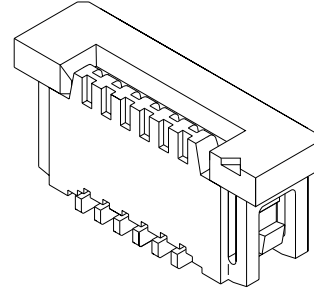
Voltage: 125V  
 Current: 1.0A  
 Contact Resistance: 20mΩ max.  
 Dielectric Withstanding Voltage: 500V AC/1 min.  
 Insulation Resistance: 100 MΩ min.

### Physical

Housing: 4/6 nylon, UL 94V-0  
 Actuator: PPS, UL 94V-0  
 Contact: Phosphor Bronze  
 Plating: Tin  
 Operating Temperature: -20 to +85°C

# molex® 1.00mm (.039") Pitch FFC/FPC Connector

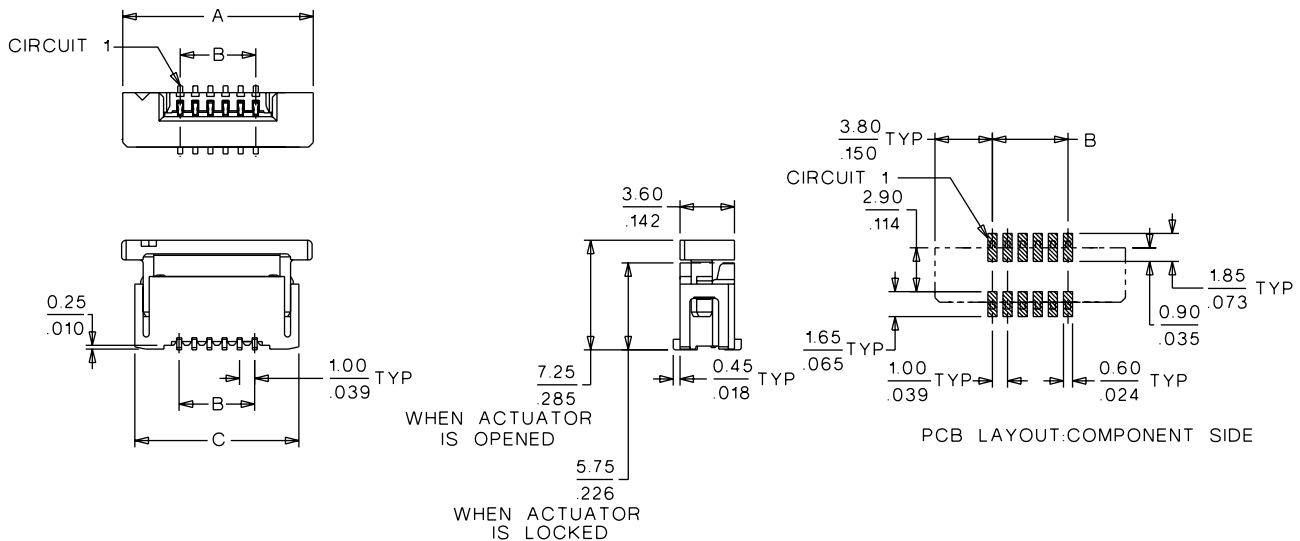
## 52610 Vertical, SMT, ZIF



FFC/FPC Connectors



## CATALOG DRAWING (FOR REFERENCE ONLY)



## ORDERING INFORMATION AND DIMENSIONS

| Circuits | Order No.  | Dimension     |               |               | Carrier Tape Width |
|----------|------------|---------------|---------------|---------------|--------------------|
|          |            | A             | B             | C             |                    |
| 6        | 52610-0690 | 12.60 (.496)  | 5.00 (.197)   | 10.85 (.427)  | 24.00 (.945)       |
| 8        | 52610-0890 | 14.60 (.575)  | 7.00 (.276)   | 12.85 (.506)  | 24.00 (.945)       |
| 10       | 52610-1090 | 16.60 (.654)  | 9.00 (.354)   | 14.85 (.585)  | 24.00 (.945)       |
| 12       | 52610-1290 | 18.60 (.732)  | 11.00 (.433)  | 16.85 (.663)  | 32.00 (1.260)      |
| 13       | 52610-1390 | 19.60 (.772)  | 12.00 (.472)  | 17.85 (.703)  | 32.00 (1.260)      |
| 14       | 52610-1490 | 20.60 (.811)  | 13.00 (.512)  | 18.85 (.742)  | 32.00 (1.260)      |
| 15       | 52610-1590 | 21.60 (.850)  | 14.00 (.551)  | 19.85 (.781)  | 32.00 (1.260)      |
| 16       | 52610-1690 | 22.60 (.890)  | 15.00 (.591)  | 20.85 (.821)  | 44.00 (1.732)      |
| 17       | 52610-1790 | 23.60 (.929)  | 16.00 (.630)  | 21.85 (.860)  | 44.00 (1.732)      |
| 18       | 52610-1890 | 24.60 (.969)  | 17.00 (.669)  | 22.85 (.900)  | 44.00 (1.732)      |
| 20       | 52610-2090 | 26.60 (1.047) | 19.00 (.748)  | 24.85 (.978)  | 44.00 (1.732)      |
| 22       | 52610-2290 | 28.60 (1.126) | 21.00 (.827)  | 26.85 (1.057) | 44.00 (1.732)      |
| 24       | 52610-2490 | 30.60 (1.205) | 23.00 (.906)  | 28.85 (1.136) | 44.00 (1.732)      |
| 25       | 52610-2590 | 31.60 (1.244) | 24.00 (.945)  | 29.85 (1.175) | 44.00 (1.732)      |
| 26       | 52610-2690 | 32.60 (1.283) | 25.00 (.984)  | 30.85 (1.215) | 44.00 (1.732)      |
| 28       | 52610-2890 | 34.60 (1.362) | 27.00 (1.063) | 32.85 (1.293) | 56.00 (2.205)      |
| 30       | 52610-3090 | 36.60 (1.441) | 29.00 (1.142) | 34.85 (1.372) | 56.00 (2.205)      |

Note: For cable specification dimensions, see cable pages at end of section