

Specification Status: Released

Electrical Rating
Voltage: 16V MAX
Current: 100A MAX

Leads:
 Nickel: 0.125mm nom.

Tape:
 None

Marking:
 None

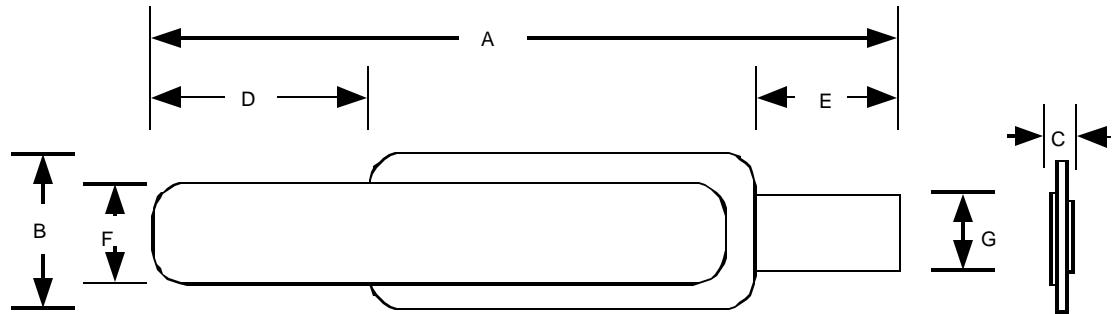


TABLE I. DIMENSIONS:

	A		B		C		D		E		F		G	
	MIN	MAX	MIN	MAX	MIN	MAX	MIN	MAX	MIN	MAX	MIN	MAX	MIN	MAX
mm:	22.8	25.2	4.9	5.1	--	0.8	7.8	9.2	2.9	4.1	2.9	3.1	2.4	2.6
in*:	(0.89)	(1.00)	(0.19)	(0.20)	--	(0.03)	(0.30)	(0.37)	(0.11)	(0.17)	(0.11)	(0.13)	(0.09)	(0.11)

*Rounded off approximation

TABLE II. PERFORMANCE RATINGS:

I HOLD	CURRENT TRIP LIMITS								TIME TO TRIP		REFERENCE RESISTANCE		ONE-HOUR POST-TRIP RESISTANCE		TRIPPED-STATE POWER DISSIPATION
	AMPS AT 0°C		AMPS AT 25°C		AMPS AT 60°C		AMPS AT 80°C		SECONDS AT 25°C, 10A		OHMS AT 25°C		OHMS AT 25°C		WATTS AT 25°C, 16V
HOLD	HOLD	TRIP	HOLD	TRIP	HOLD	TRIP	HOLD	TRIP	TYP	MAX	MIN	MAX	MIN	MAX	MAX
2.1	2.9	6.0	2.1	4.7	1.0	2.8	--	--	--	5	0.018	0.030	0.018	0.060	1.5

Reference Documents:

PS300

Precedence:

This specification takes precedence over documents referenced herein.

Effectivity:

Reference documents shall be the issue in effect on the date of invitation or bid.

CAUTION:

Operation beyond the rated voltage or current may result in rupture, electrical arcing or flame.