

**Raychem Circuit Protection**

308 Constitution Drive  
Menlo Park, CA 94025-1164  
800-227-4856  
FAX 800-227-4866

R  
**Circuit Protection®**  
**PTC Devices**  
Overcurrent Protection Device

**PRODUCT: VTP200UL**

DOCUMENT: SCD 24529  
PCN: 675114  
REV LETTER: B  
REV DATE: AUGUST 4, 2000  
PAGE NO.: 1 OF 1

**Specification Status: Released**

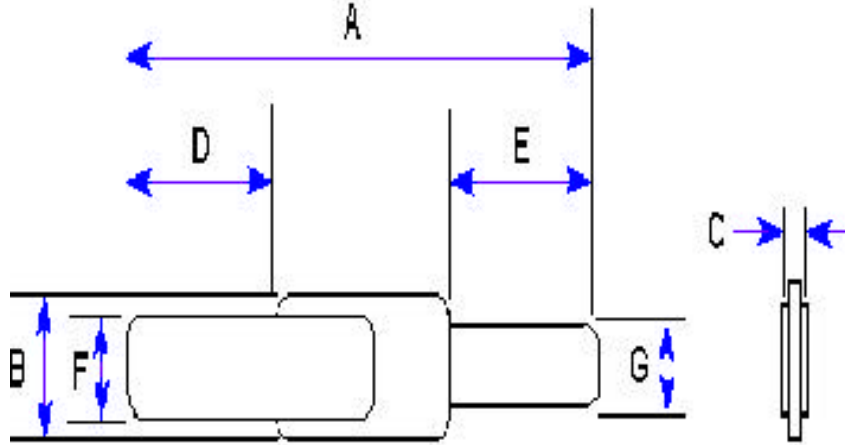
**Electrical Rating**

**Voltage: 16V MAX**  
**Current: 100A MAX**

Leads:  
Nickel: 0.125 mm nom.

Tape:  
None

Marking:  
None



**TABLE I. DIMENSIONS:**

	A		B		C		D		E		F		G	
	MIN	MAX	MIN	MAX	MIN	MAX	MIN	MAX	MIN	MAX	MIN	MAX	MIN	MAX
mm:	36.0	39.0	4.1	4.3	--	0.8	3.9	5.3	19.7	21.5	2.9	3.1	2.3	2.5
in*:	(1.42)	(1.54)	(0.16)	(0.17)	--	(0.03)	(0.15)	(0.21)	(0.78)	(0.85)	(0.11)	(0.12)	(0.09)	(0.10)

\*Rounded off approximation

**TABLE II. PERFORMANCE RATINGS:**

I HOLD	CURRENT TRIP LIMITS								TIME TO TRIP	REFERENCE RESISTANCE	ONE-HOUR POST-TRIP RESISTANCE	TRIPPED-STATE POWER DISSIPATION			
	AMPS 25°C		AMPS AT 0°C		AMPS AT 25°C		AMPS AT 60°C						AMPS AT 80°C		OHMS AT 25°C
HOLD	HOLD	TRIP	HOLD	TRIP	HOLD	TRIP	HOLD	TRIP	HOLD	TRIP	MIN	MAX	MIN	MAX	MAX
2.0	2.6	6.0	2.0	4.7	0.9	2.8	--	--	5		0.022	0.039	0.022	0.078	1.5

Reference Documents: PS300  
Precedence: This specification takes precedence over documents referenced herein.  
Effectivity: Reference documents shall be the issue in effect on the date of invitation for bid.  
CAUTION: Operation beyond the rated voltage or current may result in rupture, electrical arcing or flame.