

Raychem Circuit Protection
 308 Constitution Drive
 Menlo Park, CA 94025
 800-227-4856
 FAX 800-227-4866

Raychem
PolySwitch®
PTC Devices
 Overcurrent Protection Device

PRODUCT: VTP175U

DOCUMENT: 24454
 PCN: 513483
 REV LETTER: D
 REV DATE: OCTOBER 6, 2000
 PAGE NO.: 1 OF 1

Specification Status: Released

Electrical Rating

Voltage: 16V MAX
Current: 100A MAX

Leads:

Nickel: 0.125 mm nom.

Insulation: None

Marking: None

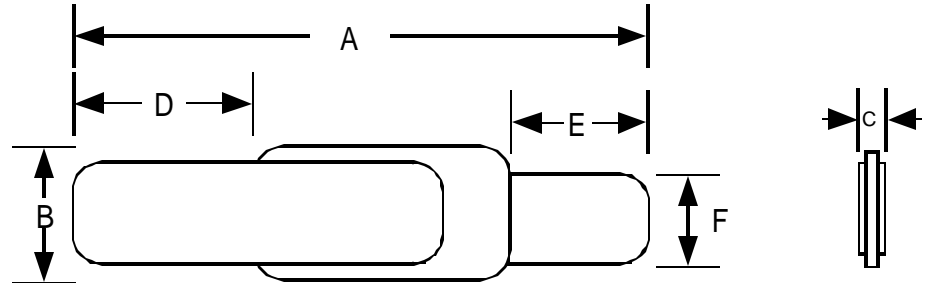


TABLE I. DIMENSIONS:

	A		B		C		D		E		F		G	
	Min	MAX	MIN	MAX	MIN	MAX	MIN	MAX	MIN	MAX	MIN	MAX	MIN	MAX
mm:	21.2	23.2	3.5	3.7	--	0.70	5.6	6.8	5.6	6.8	2.9	3.1	--	--
in*:	(0.83)	(0.91)	(0.13)	(0.15)	--	(0.03)	(0.22)	(0.27)	(0.22)	(0.27)	(0.11)	(0.12)	--	--

*Rounded off approximation

TABLE II. PERFORMANCE RATINGS:

I HOLD	CURRENT TRIP LIMITS								TIME TO TRIP	REFERENCE RESISTANCE		ONE-HOUR POST-TRIP RESISTANCE		TRIPPED-STATE POWER DISSIPATION
	AMPS AT 0°C		AMPS AT 25°C		AMPS AT 60°C		AMPS AT 80°C			OHMS AT 25°C		OHMS AT 25°C		
25°C HOLD	HOLD	TRIP	HOLD	TRIP	HOLD	TRIP	HOLD	TRIP	SECONDS AT 25°C, 8.75A MAX	MIN	MAX	MIN	MAX	
1.75	2.2	4.7	1.75	3.6	0.8	1.9	--	--	5	0.029	0.051	0.029	0.102	1.4

Reference Documents:

PS300

Precedence:

This specification takes precedence over documents referenced herein.

Effectivity:

Reference documents shall be the issue in effect on the date of invitation for bid.

CAUTION:

Operation beyond the rated voltage or current may result in rupture, electrical arcing or flame.