

Raychem Circuit Protection  
 308 Constitution Drive  
 Menlo Park, CA 94025-1164  
 800-227-4856  
 FAX 800-227-4866

**RAYCHEM**  
**Circuit Protection®**  
**PTC Devices**  
 Overcurrent Protection Device

**PRODUCT: VTP175UL**

DOCUMENT: SCD 24455  
 PCN: 517255  
 REV LETTER: F  
 REV DATE: NOVEMBER 3, 2000  
 PAGE NO: 1 OF 1

**Specification Status: Released**

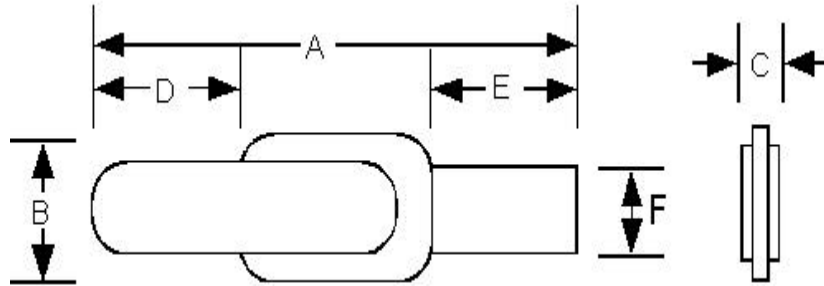
**Electrical Rating**

**Voltage: 16V MAX**  
**Current: 100A MAX**

Leads:  
 Nickel: 0.125 mm nom.

Tape:  
 None

Marking: None



**TABLE I. DIMENSIONS:**

	A		B		C		D		E		F	
	MIN	MAX	MIN	MAX	MIN	MAX	MIN	MAX	MIN	MAX	MIN	MAX
mm:	23.6	25.6	3.5	3.7	--	0.7	6.8	7.8	6.8	7.8	2.4	2.6
in*:	(0.92)	(1.01)	(0.13)	(0.15)	--	(0.03)	(0.26)	(0.31)	(0.26)	(0.31)	(0.09)	(0.10)

\*Rounded off approximation

**TABLE II. PERFORMANCE RATINGS:**

I HOLD	CURRENT TRIP LIMITS								TIME TO TRIP		REFERENCE RESISTANCE		ONE-HOUR POST-TRIP RESISTANCE		TRIPPED-STATE POWER DISSIPATION	
	AMPS 25°C HOLD	AMPS AT 0°C HOLD	AMPS AT 25°C TRIP	AMPS AT 25°C HOLD	AMPS AT 25°C TRIP	AMPS AT 60°C HOLD	AMPS AT 60°C TRIP	AMPS AT 80°C HOLD	AMPS AT 80°C TRIP	SECONDS AT 25°C, 8.75 A TYP	SECONDS AT 25°C, 8.75 A MAX	OHMS AT 25°C MIN	OHMS AT 25°C MAX	OHMS AT 25°C MIN	OHMS AT 25°C MAX	WATTS AT 25°C, 16V MAX
1.75	2.2	4.7	1.75	3.6	0.8	1.9	--	--	--	5		0.029	0.051	0.029	0.102	1.4

Reference Documents:

PS300

Precedence:

This specification takes precedence over documents referenced herein.

Effectivity:

Reference documents shall be the issue in effect on the date of invitation for bid.

CAUTION:

Operation beyond the rated voltage or current may result in rupture, electrical arcing or flame.