

**Tyco/Electronics**  
**Raychem Circuit Protection**  
 308 Constitution Drive  
 Menlo Park, CA 94025-1164  
 Phone: 800-227-4856  
 Fax: 800-227-4866

**PolySwitch®**  
**PTC Devices**  
 Overcurrent Protection Device

**PRODUCT: VTP170**

DOCUMENT: SCD 23889  
 PCN: 455407  
 REV LETTER: F  
 REV DATE: SEPTEMBER 13, 2002  
 PAGE NO.: 1 OF 1

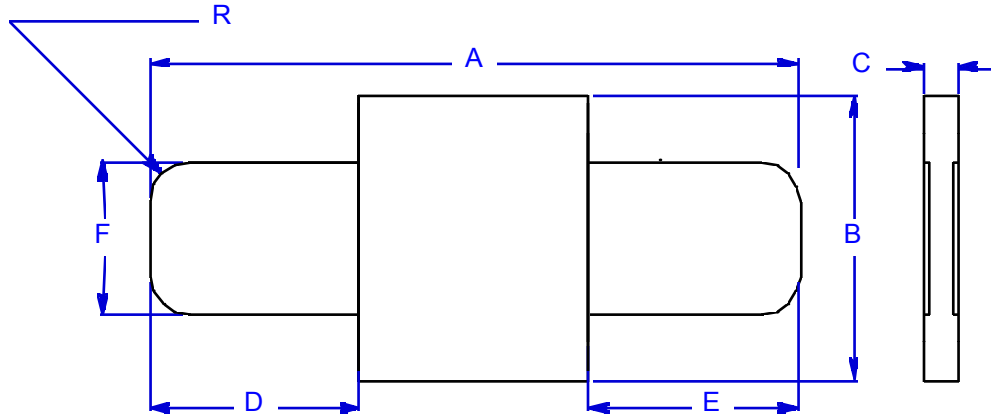
**Specification Status: Preliminary**

**Electrical Rating**  
**Voltage: 16V MAX**  
**Current: 100A MAX**

Leads:  
 Nickel: 0.13mm nom

Insulation:  
 Polyester Tape

Marking:  
 \_\_\_\_\_ Manufacturer's Mark  
 ☒ V17 \_\_\_\_\_ Part Identification  
 ☐☐☐☐ \_\_\_\_\_ Lot Identification



**TABLE I. DIMENSIONS:**

	A		B		C		D		E		F		G	
	Min	MAX	MIN	MAX	MIN	MAX	MIN	MAX	MIN	MAX	MIN	MAX	MIN	MAX
mm:	15.4	17.5	7.0	7.4	0.50	0.8	4.0	6.2	4.0	6.2	3.9	4.1	--	--
in*:	(0.606)	(0.689)	(0.275)	(0.292)	(0.02)	(0.03)	(0.157)	(0.244)	(0.157)	(0.244)	(0.15)	(0.16)	--	--

	R	
	TYP	MAX
mm:	1.0	--
in*:	(0.039)	--

\*Rounded off approximation

**TABLE II. PERFORMANCE RATINGS:**

I HOLD	CURRENT TRIP LIMITS								TIME TO TRIP		REFERENCE RESISTANCE		ONE-HOUR POST-TRIP RESISTANCE		TRIPPED-STATE POWER DISSIPATION			
	AMPS AT 25°C		AMPS AT 0°C		AMPS AT 25°C		AMPS AT 60°C		AMPS AT 80°C		SECONDS AT 25°C, 8.5 A		OHMS AT 25°C		WATTS AT 25°C, 16V			
HOLD	HOLD	TRIP	HOLD	TRIP	HOLD	TRIP	HOLD	TRIP	HOLD	TRIP	TYP	MAX	MIN	MAX	TYP	MAX	TYP	MAX
1.7	2.2	4.5	1.7	3.4	0.8	1.8	0.3	0.9	1.0	5.0	1.0	5.0	0.030	0.052	0.075	0.105	1.0	1.4

Reference Documents:  
 Precedence:  
 Effectivity:  
 CAUTION:

PS300  
 This specification takes precedence over documents referenced herein.  
 Reference documents shall be the issue in effect on the date of invitation for bid.  
 Operation beyond the rated voltage or current may result in rupture, electrical arcing or flame.