

Specification Status: Released

Electrical Rating

Voltage: 24V MAX
Current: 100A MAX

Leads:

Nickel: 0.125 mm nom.

Tape:

Polyester

Marking:

- Manufacturer's Mark
- ⊗ L19 — Part Identification
- — Lot Identification

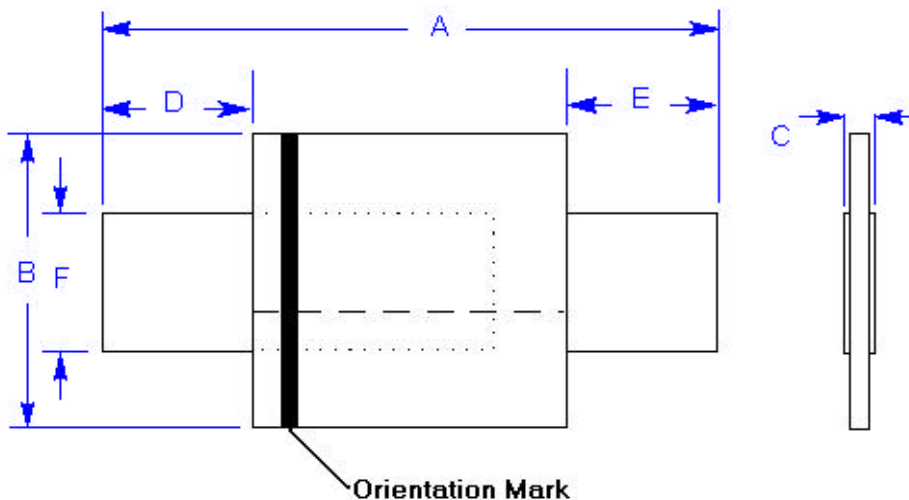


TABLE I. DIMENSIONS:

	A		B		C		D		E		F	
	MIN	MAX	MIN	MAX	MIN	MAX	MIN	MAX	MIN	MAX	MIN	MAX
mm:	21.3	23.4	10.2	11.0	0.5	1.1	5.0	7.6	5.0	7.6	4.8	5.4
in*:	(0.84)	(0.92)	(0.40)	(0.43)	(0.02)	(0.04)	(0.20)	(0.30)	(0.20)	(0.30)	(0.19)	(0.21)

*Rounded off approximation

TABLE II. PERFORMANCE RATINGS:

I HOLD	CURRENT TRIP LIMITS								TIME TO TRIP	REFERENCE RESISTANCE	ONE-HOUR POST-TRIP RESISTANCE	TRIPPED-STATE POWER DISSIPATION				
	AMPS AT 0°C		AMPS AT 20°C		AMPS AT 60°C		AMPS AT 80°C						SECONDS AT 20°C, 10 A	OHMS AT 20°C		WATTS AT 20°C, 15V
HOLD	HOLD	TRIP	HOLD	TRIP	HOLD	TRIP	HOLD	TRIP	TYP	MAX	MIN	MAX	TYP	MAX	TYP	MAX
1.9	2.4	5.0	1.9	4.2	1.1	2.5	0.5	1.3	1.4	3.0	0.030	0.057	0.075	0.100	1.5	1.9

Reference Documents:
 Precedence:
 Effectivity:
 CAUTION:

PS300
 This specification takes precedence over documents referenced herein.
 Reference documents shall be the issue in effect on the date of invitation for bid.
 Operation beyond the rated voltage or current may result in rupture, electrical arcing or flame.