

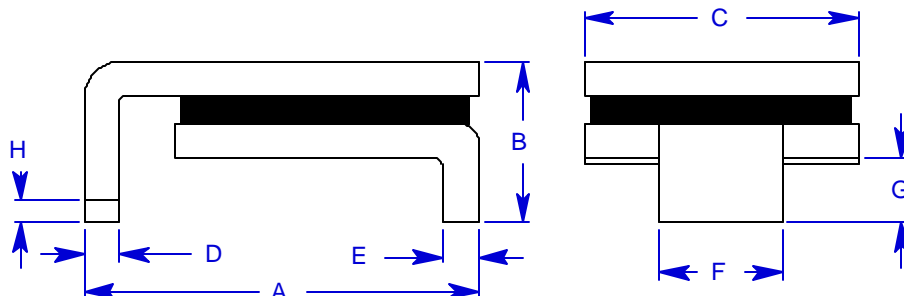
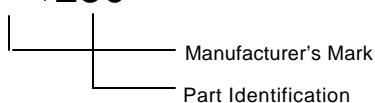
Specification Status: Released

Maximum Electrical Ratings

Operating Voltage / Interrupt Current

15V / 40A
 12V / 60A
 5V / 125A

Marking



Notes:

1. All metal surfaces are tin plated.
2. Devices cannot be wave soldered.
3. Drawing not to scale.

TABLE I. DIMENSIONS:

	A		B		C		D		E		F		G		H
	MIN	MAX	MIN	MAX	MIN	MAX	MIN	MAX	MIN	MAX	MIN	MAX	MIN	MAX	MIN
mm:	8.00	9.40	--	3.00	5.99	6.71	0.56	0.71	0.56	0.71	3.68	3.94	0.66	1.37	0.43
in*:	(0.315)	(0.370)	--	(0.118)	(0.236)	(0.264)	(0.022)	(0.028)	(0.022)	(0.028)	(0.145)	(0.155)	(0.026)	(0.054)	(0.017)

*Rounded off approximation

TABLE II. PERFORMANCE RATINGS:

CURRENT RATINGS		TIME TO TRIP	REFERENCE RESISTANCE VALUES (PRE REFLOW)		TRIPPED-STATE POWER DISSIPATION
AMPS AT 25°C HOLD	AMPS AT 25°C TRIP	SECONDS AT 25°C, 9.85 A MAX	OHMS AT 25°C MIN	OHMS AT 25°C MAX*	WATTS AT 25°C TYP.
1.97	5.0	30	0.035	0.085	1.2

Reference Documents:

Precedence:

Effectivity:

CAUTION:

*Maximum resistance is measured both 1 hour post reflow and 1 hour post trip.
 PS300, PS400, E.N. SMD 1.0x

This specification takes precedence over documents referenced herein.

Reference documents shall be the issue in effect on the date of invitation for bid.

Operation beyond the rated voltage or current may result in rupture, electrical arcing or flame.