

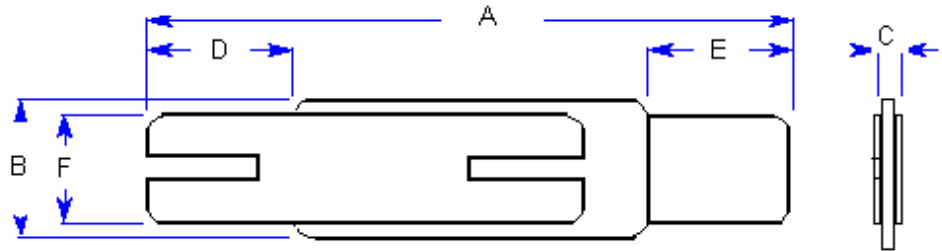
**Specification Status: Preliminary**

**Electrical Rating**

**Voltage: 12V MAX**  
**Current: 100A MAX**

Nickel Leads:  
 0.125 mm nom.

Marking:  
 None



**TABLE I. DIMENSIONS:**

	A		B		C		D		E		F		G	
	MIN	MAX	MIN	MAX	MIN	MAX	MIN	MAX	MIN	MAX	MIN	MAX	MIN	MAX
mm:	20.9	23.1	4.9	5.1	--	0.7	4.1	6.0	4.1	6.0	3.9	4.1	0.3	0.7
in*:	(0.82)	(0.91)	(0.19)	(0.20)	--	(0.03)	(0.16)	(0.24)	(0.16)	(0.24)	(0.15)	(0.16)	(0.01)	(0.03)

	H	
	MIN	MAX
mm:	3.8	4.2
in*:	(0.15)	(0.17)

\*Rounded off approximation

**TABLE II. PERFORMANCE RATINGS:**

I HOLD	CURRENT TRIP LIMITS								TIME TO TRIP	REFERENCE RESISTANCE	ONE-HOUR POST-TRIP RESISTANCE	TRIPPED-STATE POWER DISSIPATION				
	AMPS 25°C HOLD	AMPS AT 0°C HOLD	AMPS AT 25°C TRIP	AMPS AT 60°C HOLD	AMPS AT 60°C TRIP	AMPS AT --°C HOLD	AMPS AT --°C TRIP	SECONDS AT 25°C, 10.0A TYP					SECONDS AT 25°C, 10.0A MAX	OHMS AT 25°C MIN	OHMS AT 25°C MAX	WATTS AT 25°C, 12V TYP
2.3	3.4	6.6	2.3	5.0	0.9	2.3	--	--	--	5	0.012	0.018	0.031	0.036	--	2.5

Reference Documents:  
 Precedence:  
 Effectivity:  
 CAUTION:

PS300  
 This specification takes precedence over documents referenced herein.  
 Reference documents shall be the issue in effect on the date of invitation or bid.  
 Operation beyond the rated voltage or current may result in rupture, electrical arcing or flame.