

**Specification Status: Released**

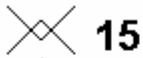
**Maximum Electrical Rating**

**Voltage: 6.0V<sub>DC</sub> MAX**  
**Short Circuit Current: 100A**

**Notes:**

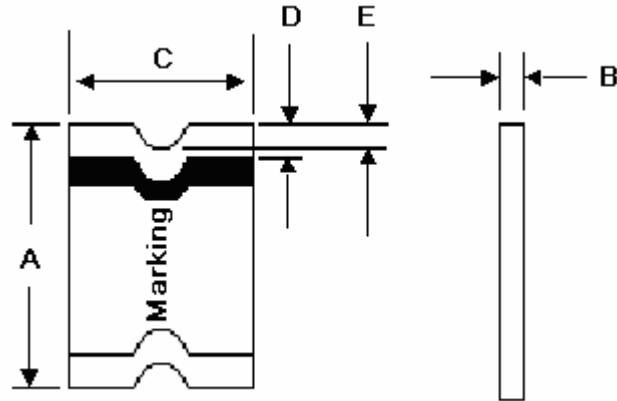
1. All terminations are tin plated.
2. Drawing not to scale

**Marking:**



PART IDENTIFICATION

MANUFACTURER'S MARK



**TABLE I. DIMENSIONS:**

	A		B		C		D		E
	MIN	MAX	MIN	MAX	MIN	MAX	MIN	MAX	MIN
mm:	3.00	3.40	0.55	0.89	1.37	1.80	0.25	0.75	0.076
in:	(0.118)	(0.134)	(0.022)	(0.035)	(0.054)	(0.071)	(0.010)	(0.030)	(0.003)

**TABLE II. PERFORMANCE RATINGS:**

CURRENT RATINGS**						TIME TO TRIP **	RESISTANCE VALUES	TRIPPED-STATE POWER DISSIPATION**	
AMPERES AT 0°C		AMPERES AT 25°C		AMPERES AT 60°C		SECONDS AT 25°C, 8.0A MAX	OHMS AT 25°C	WATTS AT 25°C, 6.0V MAX	
HOLD	TRIP	HOLD	TRIP	HOLD	TRIP		MIN	MAX*	
1.77	3.54	1.50	3.00	1.10	2.20	0.3	0.04	0.110	0.8

\*Maximum resistance is measured 1 hour after reflow.

\*\* Values specified were determined using PCB's with 0.030"X1.5 ounce copper traces.

Agency Recognitions:

UL, CSA, TÜV

Reference Documents:

PS300

Precedence:

This specification takes precedence over documents referenced herein.

Effectivity:

Reference documents shall be the issue in effect on the date of invitation for bid.

CAUTION:

Operation beyond the rated voltage or current may result in rupture, electrical arcing or flame.

**Materials Information**

**ROHS Compliant**

Directive 2002/95/EC  
Compliant

**ELV Compliant**

Directive 2000/53/EC  
Compliant

**Pb-Free**

