

Specification Status: RELEASED

Max Electrical Rating at 20°C

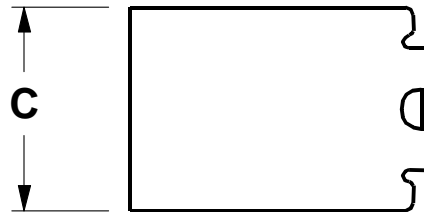
Operating Voltage: 60V_{DC}
 Interrupt Current: 3A_{RMS}

Fault Voltage: 250V_{RMS}

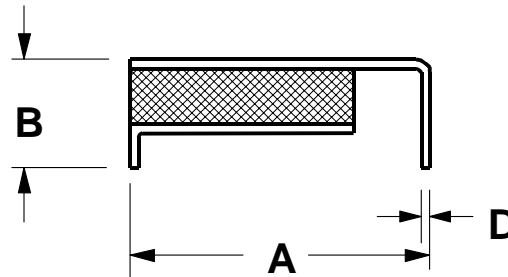
Terminal Material: Tin Plated Brass

Marking:

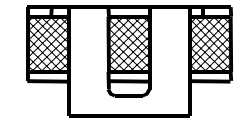
- Raychem Logo
- XX T13 — Part Identification
- □ □ □ — Lot Identification



Top View



Side View



End View

TABLE I. DIMENSIONS:

	A		B		C		D	E
	MIN	MAX	MIN	MAX	MIN	MAX	NOM	NOM
mm:	8.5	9.4	--	3.4	--	7.4	0.3	3.8
in:	(0.335)	(0.370)	--	(0.135)	--	(0.290)	(0.011)	(0.150)

TABLE II. PERFORMANCE RATINGS @ 20°C (unless otherwise noted):

I _{HOLD} (A)	RESISTANCE (Ω)			TIME TO TRIP(s) @ 1A		OPERATING TEMPERATURE (°C)		POWER DISSIPATION (W) TYP
	R MIN	R MAX	R _{1 MAX} *	TYP	MAX	MIN	MAX	
20°C	7.0	10.0	17.0	1.1	2.0	-40	85	1.1

*Maximum device resistance at 20°C measured 1 hour post trip and 24 hours post reflow.

Additional Ratings @ 20°C

Lightning Withstand: ITU-T @ 1.5kV

Storage Temperature: -40° to 85°C

Agency Recognition:
 Reference Documents:
 Precedence:
 Effectivity:
 CAUTION:

UL, CSA, TUV
 PS300
 This specification takes precedence over documents referenced herein.
 Reference documents shall be the issue in effect on the date of invitation for bid.
 Operation beyond the rated voltage or current may result in rupture, electrical arcing or flame.

Materials Information

ROHS Compliant

ELV Compliant

Pb-Free

Directive 2002/95/EC
 Compliant

Directive 2000/53/EC
 Compliant

