

Specification Status: RELEASED

Max Electrical Rating at 20°C

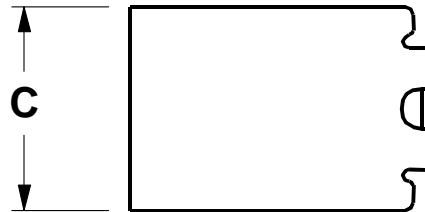
Operating Voltage: 60V_{DC}
 Interrupt Current: 3A_{RMS}

Fault Voltage: 250V_{RMS}

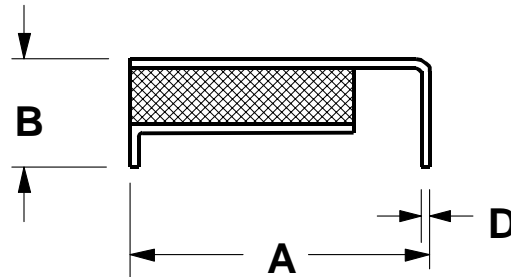
Terminal Material: Tin Plated Brass

Marking:

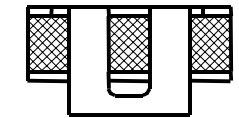
- Raychem Logo
- XT13 — Part Identification
- — Lot Identification



Top View



Side View



End View

TABLE I. DIMENSIONS:

	A		B		C		D	E
	MIN	MAX	MIN	MAX	MIN	MAX	NOM	NOM
mm:	8.5	9.4	--	3.4	--	7.4	0.3	3.8
in:	(0.335)	(0.370)	--	(0.135)	--	(0.290)	(0.011)	(0.150)

TABLE II. PERFORMANCE RATINGS @ 20°C (unless otherwise noted):

I _{HOLD} (A)	RESISTANCE (Ω)			TIME TO TRIP (s) @ 1A		OPERATING TEMPERATURE (°C)		POWER DISSIPATION (W)
	R MIN	R MAX	R _{1MAX} *	TYP	MAX	MIN	MAX	TYP
20°C	9.0	12.0	20.0	0.7	1.5	-40	85	1.1

*Maximum device resistance at 20°C measured 1 hour post trip and 24 hours post reflow.

Additional Ratings @ 20°C

Lightning Withstand: ITU-T @ 1.5kV Storage Temperature: -40° to 85°C

Agency Recognition: UL, CSA, TUV
 Reference Documents: PS300

Precedence: This specification takes precedence over documents referenced herein.

Effectivity: Reference documents shall be the issue in effect on the date of invitation for bid.

CAUTION: Operation beyond the rated voltage or current may result in rupture, electrical arcing or flame.

Materials Information

ROHS Compliant

ELV Compliant

Pb-Free

Directive 2002/95/EC
Compliant

Directive 2000/53/EC
Compliant

