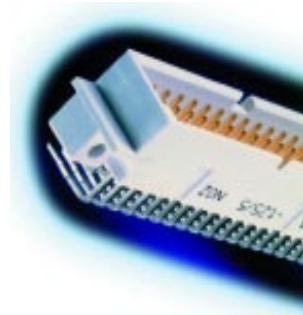


PRESS-FIT CONNECTIONS



IEC 352-5

Material Phosphor bronze

Plating on press-in area

Gold plated version 0.1 µm gold over 1-2 µm nickel
 Tinlead plated version 1-3 µm tinlead over 1-2 µm nickel

Press-in force

One pin 65-120 N
 (hole diameter 0.94-1.09 mm)
 64 pins 17 KN
 (hole diameter 1.04 mm)
 96 pins 20 KN
 (hole diameter 1.04 mm)

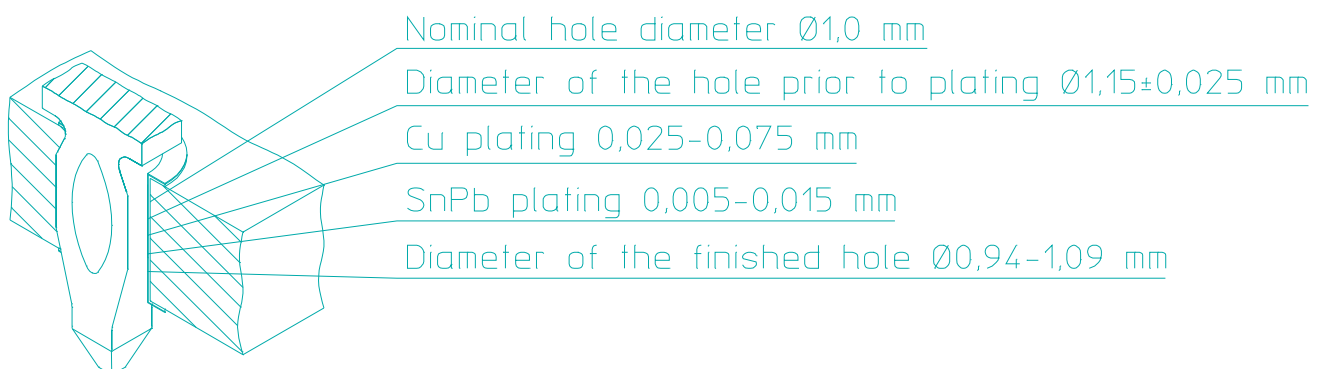
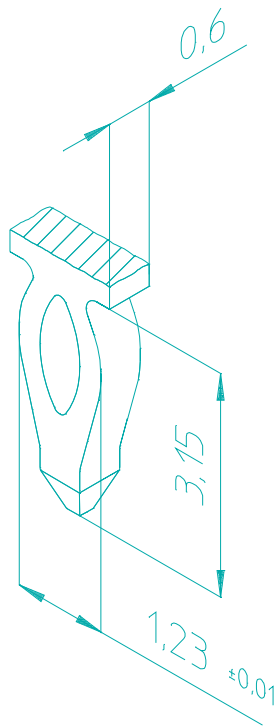
Push-out force

One pin 30-60 N

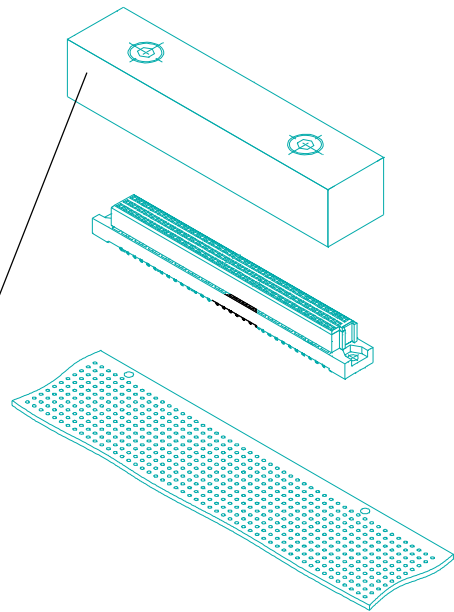
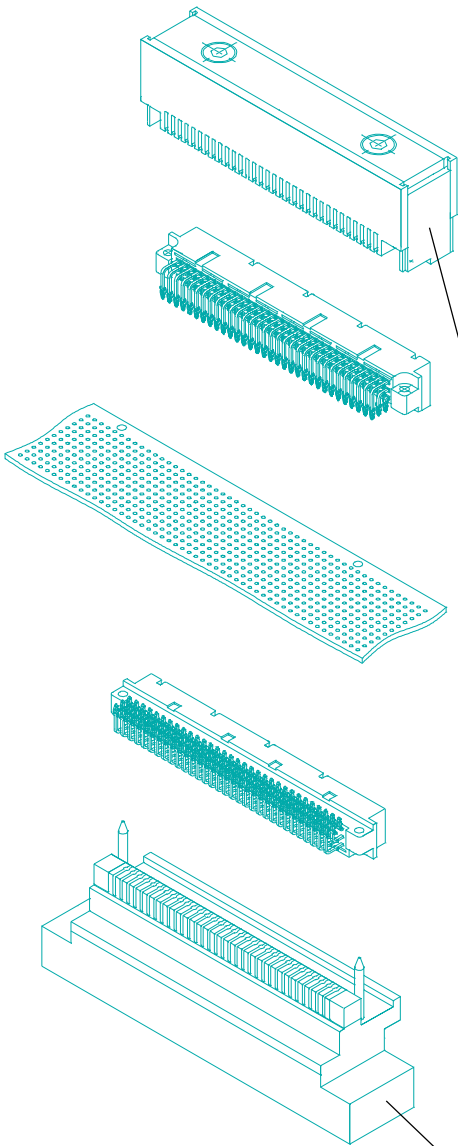
Press-fit version available in following types:

Male B, C, C/2, C/4, M
 (right angle tail)

Female B, C, C/2, C/4, M
 (straight tail)



PRESS-FIT TECHNIQUES



FEMALE

No special tooling required.
On request, also custom design tooling can be manufactured.

MALE

Press-in tool for insertion from above
ordering codes:

- C PAININ-948019
- C/2 PAININ-948020
- C/4 PAININ-948021
- B PAININ-948022
- M PAININ-948023

Press-in tool for insertion from below
ordering codes:

- C PAININ-948017
- C/2 PAININ-948024
- C/4 PAININ-948025
- B PAININ-948026
- M PAININ-948027