

24 V DRIVE, FTP-607 SERIES

HIGH SPEED THERMAL PRINTER

2-INCH TYPE EASY LOAD MECHANISM

FTP-627MCL103/113

■ OVERVIEW

The FTP-607MCL Series thermal printer (driven by 24VDC) provides ultra-high speed printing (100mm/s) for 2-inch and 3-inch wide paper. Our original platen removal mechanism allows easy paper loading and maintenance.

The FTP-607 MCL series can be used for a variety of applications, such as POS/ECR, Kiosk terminals, banking terminals, and measurement and medical equipment.

■ HIGHLIGHTS

- **Compact size**
Height 15.5 mm, width 70.4 mm, depth 33.0 mm for the 2 inch model. The 3-inch product has a width of 92.4mm.
- **High speed printing**
It can print at 100 mm/s (800 dotlines/s) maximum by using Fujitsu's head drive control.
- **Easy loading mechanism (ELM) type**
Our detachable platen removal mechanism improved paper loading and maintenance.
- **Multi-featuring diecast frame**
By application of multi-featuring diecast frame, continuous print by function of heat-sink, high ESD stand by function of earth frame and shock/vibration stand by function of solid frame are valid.
- **High resolution printing**
8 dots/mm of resolution printing is possible.



■ PART NUMBERS

Name		Part Number
Printer Mechanism		FTP-627MCL103 FTP-627MCL113
LSI		FTP-627CU201
Interface Board	parallel	FTP-627DCL218
	serial	FTP-627DSL238
Interface Cable (board to mechanism)	Centronics	FTP-628Y202
	RS-232C	FTP-628Y302
Power supply cable	logic	FTP-629Y401
	head, motor	FTP-629Y601

■ SPECIFICATIONS

Item		Specifications	
Part number		FTP-627MCL103	FTP-627MCL113
Printing method		Thermal-sensitive line dot method	
Dot structure		384 dots/line	
Dot pitch (Horizontal)		0.125 mm (8 dots/mm)—Dot density	
Dot pitch (Vertical)		0.125 mm (8 dots/mm)—Line feed pitch	
Effective printing area		48 mm	
Number of columns		ANK 32 columns/line (max.12x 24 dot font)	
Paper width		58 mm ⁺⁰ ₋₁	
Paper thickness		60 to 100 μ m (some paper in this range may not be used because of paper characteristics)	
Printing Speed		Maximum 100mm/sec. (800 dot line/sec.)	
Character types		Alphanumeric, katakana: International and special characters: JIS Kanji (supported when Kanji CG is mounted):	159 types 195 types about 6800 types
Character, dimensions (H×W), number of columns	(1.5 × 3.0mm) (3.0 × 3.0mm) (1.0 × 2.0 mm) (2.0 × 2.0 mm)	12 × 24 dots, 32 columns: ANK 24 × 24 dots, 16 columns: ANK, Kanji 8 × 16 dots, 48 columns: ANK 16 × 16 dots, 24 columns: ANK, Kanji	

■ SPECIFICATIONS

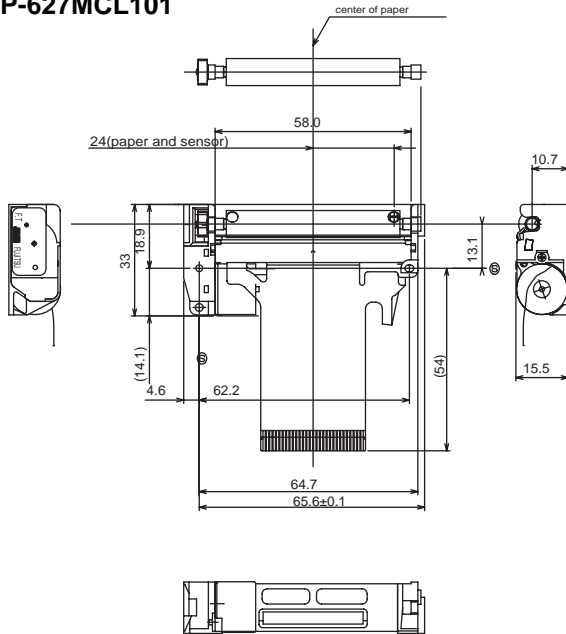
Item		Specification	
		FTP-627MCL103	FTP-627MCL113
Interface		Conforms to RS232C / Centronics	
Operating Voltage	For print head	24 VDC $\pm 5\%$, 1.0 A average (1.5A peak) 24V, 25% printing ratio	
	For motor	24 VDC, 1 A maximum	
	For logic	5 VDC $\pm 5\%$, 0.1 A maximum	
External dimensions	Printer mechanism	70.4 x 33.0 x 15.5 mm (WxDxH)	75.0 x 33.4 x 15.5 mm (WxDxH)
	Interface board	70 x 60 x 24 mm (WxDxH)	
Weight		Approximately 42g	Approximately 54g
Life	Head	Pulse resistance: 50 million pulses/dot (under our standard conditions). Abrasion resistance: paper traveling distance 50km (print ratio: 25% or less)	
Operating environment	Operating temperature	0° C to +50° C*1	
	Operating humidity	20 to 85% RH (no condensation)	
	Storage temperature	-20° C to +60° C (paper not included)	
	Storage humidity	5 to 95% RH (no condensation)	
Detection function	Head temperature detection	Detected by thermistor	
	Paper out/mark detection	Detected by photo-interrupter	
	Platen release detection	Detected by slide switch (103/383 only)	
Recommended thermal sensitive paper		FTP-020PU001 (58mm)	

*1: printing density assurance range, operation is possible at -25°C to +70°C

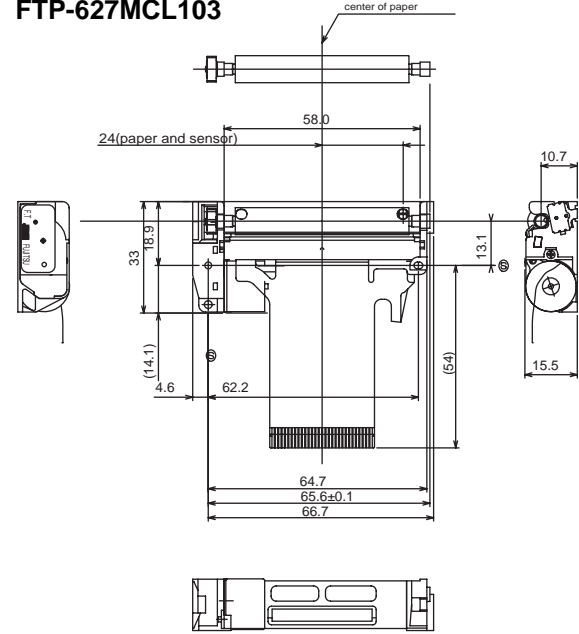
■ DIMENSIONS

1. Printer mechanism

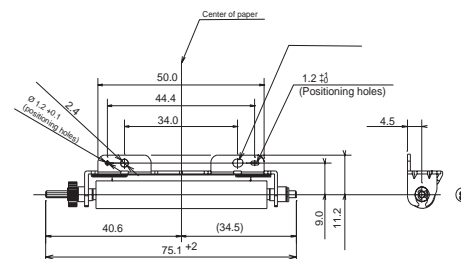
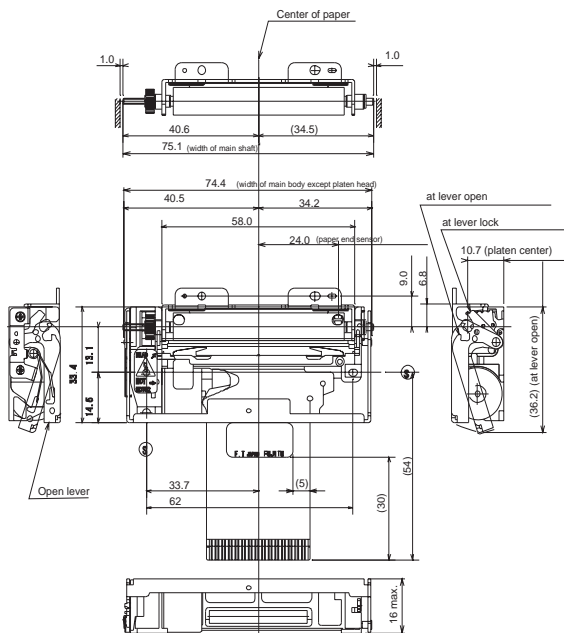
FTP-627MCL101



FTP-627MCL103

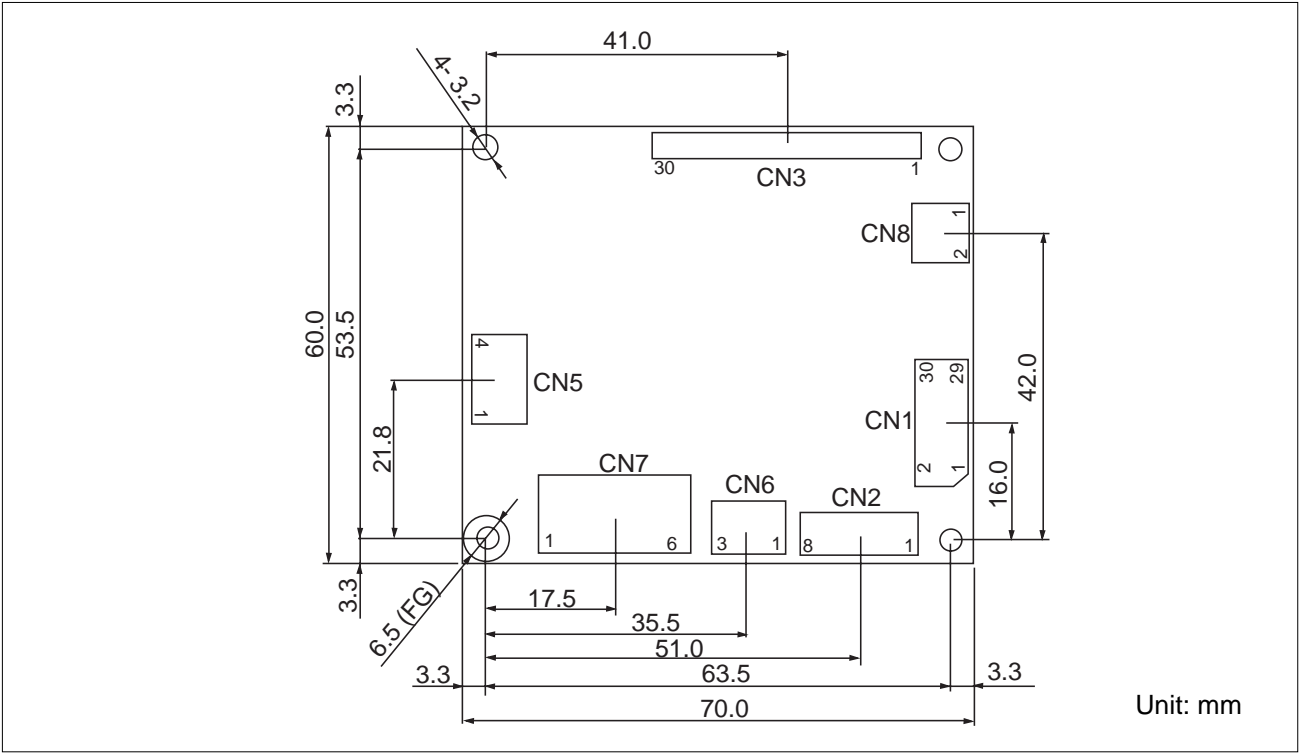


FTP-627MCL113



Unit: mm

2 Interface board



■ CONNECTOR PIN ASSIGNMENT OF MECHANISM (FPC)

1. Thermal Head

Part number : 52610-3090 Molex or equivalent

FTP-627MCL101/103 PIN ASSIGNMENT

No	Signal	I/O	Contents
1	PHK	—	Photointerrupter (Cathode)
2	VSEN	I	Ground power supply for paper sensor
3	PHE	O	Photointerrupter (Emitter)
4	SW	—	Platen open switch
5	SW	O	Platen open switch
6	VH	—	Power supply for thermal head
7	VH	—	
8	VH	—	
9	DI	I	Print data in
10	STB3	I	Strobe 3
11	VDD	—	Power for logic
12	TH	O	Thermistor
13	GND	—	Ground power supply for thermal head
14	GND	—	
15	GND	—	
16	GND	—	
17	GND	—	
18	GND	—	
19	STB1	I	Strobe 1
20	STB2	I	Strobe 2
21	LAT	I	Print data latch
22	CLK	I	Clock
23	NC	—	Not connected
24	VH	—	Power supply for thermal head
25	VH	—	
26	VH	—	
27	MT/A	I	Stepping motor excitation signal
28	MT/ \bar{A}	I	
29	MT/B	I	
30	MT/ \bar{B}	I	

Fujitsu Components International Headquarter Offices

Japan

Fujitsu Component Limited
Gotanda-Chuo Building
3-5, Higashigotanda 2-chome, Shinagawa-ku
Tokyo 141, Japan
Tel: (81-3) 5449-7010
Fax: (81-3) 5449-2626
Email: promothq@ft.ed.fujitsu.com
Web: www.fcl.fujitsu.com

North and South America

Fujitsu Components America, Inc.
250 E. Caribbean Drive
Sunnyvale, CA 94089 U.S.A.
Tel: (1-408) 745-4900
Fax: (1-408) 745-4970
Email: marcom@fcai.fujitsu.com
Web: www.fcai.fujitsu.com

Europe

Fujitsu Components Europe B.V.
Diamantlaan 25
2132 WV Hoofddorp
Netherlands
Tel: (31-23) 5560910
Fax: (31-23) 5560950
Email: info@fceu.fujitsu.com
Web: www.fceu.fujitsu.com

Asia Pacific

Fujitsu Components Asia Ltd.
102E Pasir Panjang Road
#04-01 Citilink Warehouse Complex
Singapore 118529
Tel: (65) 6375-8560
Fax: (65) 6273-3021
Email: fcal@fcal.fujitsu.com
www.fcal.fujitsu.com

© 2004 Fujitsu Components America, Inc. All company and product names are trademarks or registered trademarks of their respective owners. Rev. 07/01/2004.