

COIL DATA CHART

Standard Type

Nominal voltage [VDC]	Coil resistance [ohm](±10%)	Must operate voltage [VDC]	Must release voltage [VDC]	Nominal power [mW]
1.5	16.1	1.13	0.15	140
3	64.3	2.25	0.3	140
4	114	3	0.4	140
4.5	145	3.38	0.45	140
6	257	4.5	0.6	140
9	579	6.75	0.9	140
12	1028	9	1.2	140
24	2504	18	2.4	230

Single Winding Latching Type

Nominal voltage [VDC]	Coil resistance [ohm](±10%)	Must operate voltage [VDC]	Must release voltage [VDC]	Nominal power [mW]
1.5	22.5	1.13	1.13	100
3	90	2.25	2.25	100
4.5	203	3.38	3.38	100
6	360	4.5	4.5	100
9	810	6.75	6.75	100
12	1440	9	9	100
24	4800	18	18	120

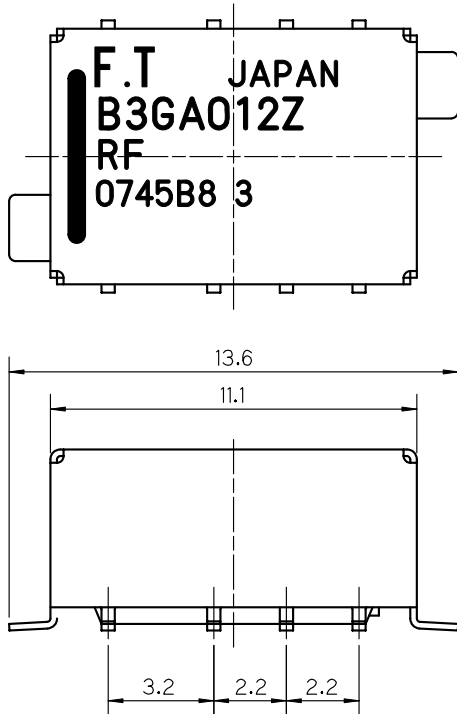
SPECIFICATIONS

Item		Ordering Code	
		FTR-B3G() ()Z-RF	
Contact	Arrangement	2 Form C (SPDT)	
	Material	Gold overlay silver alloy	
	Style	Bifurcated	
	Resistance (initial)	Max. 75mohm	
	Rating (resistive)	125VAC 0.3A/ 30VDC 1A/ 1GHz 1W	
	Maximum Carrying Current	2A	
	Maximum Switching Power	62.5VA/30W	
	Maximum Switching Voltage	30VDC	
	Maximum Switching Current	1A	
High Frequency Characteristics	Isolation	30dB min. (at 1GHz)	
	Insertion Loss	0.2dB max. (at 1GHz)	
	V.S.W.R.	1.2max. (at 1GHz)	
	Maximum carry power	1W (at 1GHz)	
	Maximum switching power	3W (at 1GHz)	
Coil	Nominal Power (at 20°C)	0.2W	
	Operate Power (at 20°C)	0.1W	
	Operating Temperature	-40°C to +85°C (No frost)	
Time Value	Operate (at nominal voltage)	Maximum 3ms	
	Release (at 0V)	Maximum 3ms	
Insulation	Resistance (at 500VDC)	Minimum 1,000Mohm	
	Dielectric Strength	between open contacts	750VAC 1minute
		between adjacent contacts	750VAC 1minute
		between coil and contacts	750VAC 1minute
	between grand and coil/contacts	500VAC 1minute	
Life	Mechanical	50 × 10 ⁶ operations minimum	
	Electrical	100 × 10 ³ operations minimum (at nominal load)	
Other	Vibration Resistance	Misoperation	10 to 55Hz (double amplitude of 3.3mm)
		Endurance	10 to 55Hz (double amplitude of 5.0mm)
	Shock Resistance	Misoperation	750m/s ² (11 ± 1ms)
		Endurance	1,000m/s ² (6 ± 1ms)
	Unit Mass		Approximately 1.3g

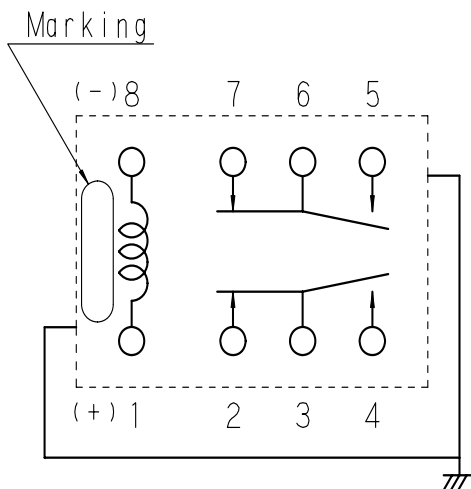
■ DIMENSIONS

(Unit : mm)

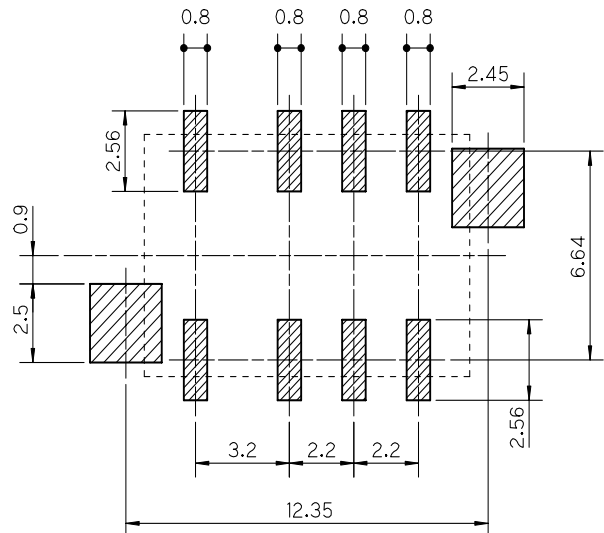
• Dimensions



• Schematics (Top view)



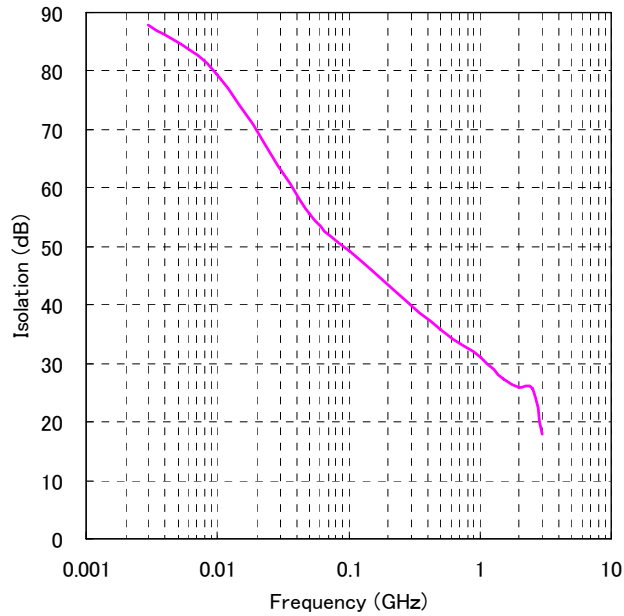
• Suggested mounting pad (Top view)



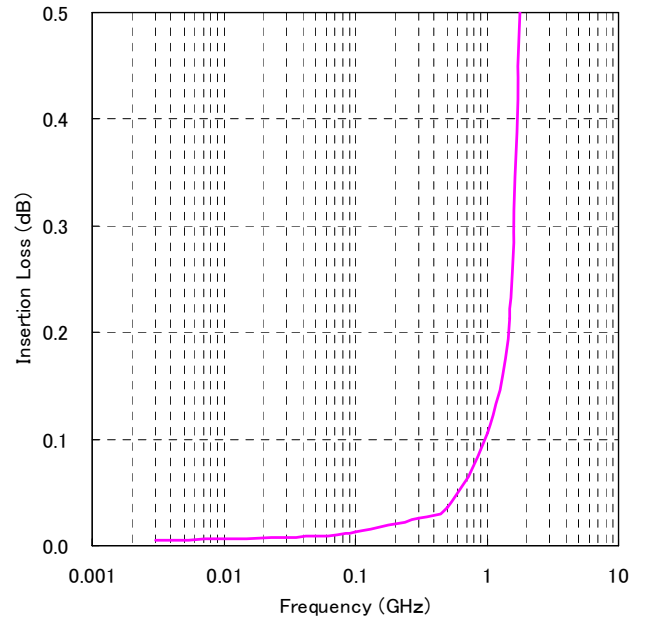
REFERENCE DATA – High Frequency Characteristics

Sample relay : Coil nominal voltage 12V type
Measuring condition : Impedance 50 ohm

● Isolation



● Insertion loss



● V.S.W.R.

