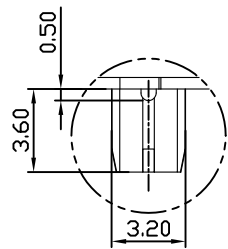
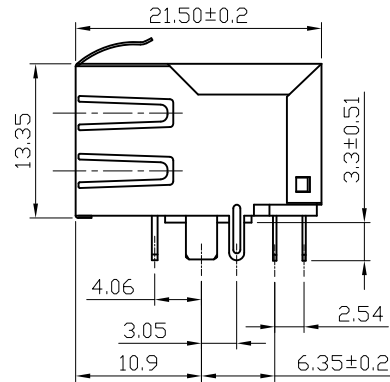
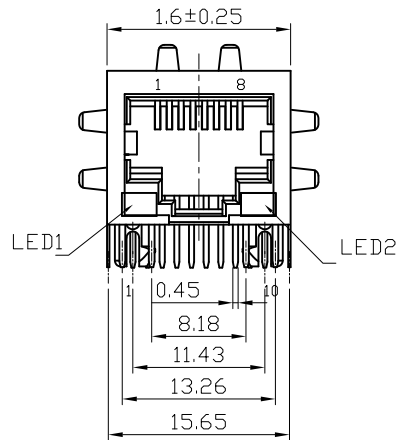
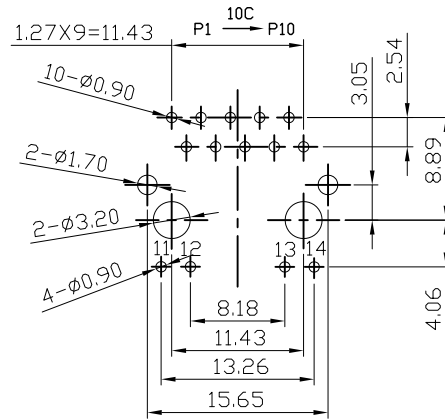
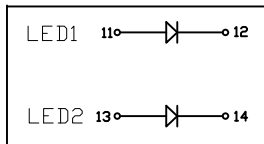


1	2	3	4	5	6	7	8	9	10
SWITCH CIRCUIT			MATERIAL AND FINISH AS BELOW						
WHEN CARD IS EJECTED		WHEN CARD IS INSERTED	A	Housing	HTN UL94V-0 Black		E		
			B	Contact	Phosphor Bronze C5210,Contact Area:5u" Gold		F		
			C	Shell	Brass C2680, Nickel Plated		G		
			D				H		



DETAIL "C"
SCALE 2:1



PC Board Layout
Component Side Shown

SPECIFICATION:

1. ELECTRICAL

- 1.1 Current Rating: 8m ADC
- 1.2 Voltage Rating: 30 VDC
- 1.3 Contact Resistance: 50mΩ
- 1.4 Insulation Resistance: 1000MΩ
- 1.5 Dielectric Withstanding Voltage: 1000VAC

2. MECHANICAL

- 2.1 Durability: 750 Cycle

3. ENVIRONMENTAL

- 3.1 Operating temperature range: 0°C ~ +70°C
- 3.2 Storage temperature range: -40°C ~ +85°C

4. SOLDER ABILITY

- 4.1 Recommended Wave Soldering Temperature: 260°C
- 4.2 PCB Retention Pre.-Solder: 1 LB Min.
- 4.3 PCB Retention Post-Solder: 10 LBS Min.

P1	P2	P3	P4	P5	P6	P7	P8	P9	P10	P11	P12
----	----	----	----	----	----	----	----	----	-----	-----	-----

PIN ASSIGNMENT

214A-11CAB	PoE Jack 10/100 Base With LED(LED1:Green+LED2:Yellow)
214A-11CAA	PoE Jack 10/100 Base With LED(LED1:Yellow+LED2:Green)

PRODUCT NO.	DESCRIPTION										
	UNLESS OTHERWISE SPECIFIED TOLERANCE										
ANGLES	ANG.	±5°									
LINEAR	0.	±0.3									
	0.0	±0.25									
	0.00	±0.20									
SCALE	AS SHOWN	UNIT: mm									
DRAWN	Willis	2014/07/14	DRAWN NAME:								
CHECKED	Angel	2014/07/14	RJ45 PoE Jack 10/100 Base With LED								
APPROVED	Ken	2014/07/14	PRODUCT NO.	214A-11CAX							
REV.	1.0	FILE NAME	214A-11CAX_B_2								

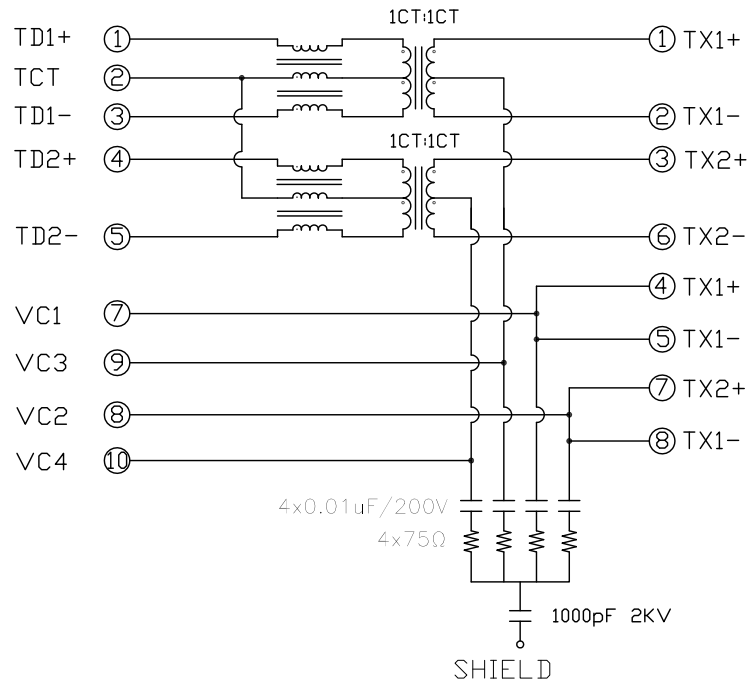


www.attend.com.tw

REV.	DESCRIPTION	DATE	REV.	DESCRIPTION	DATE	SIZE	REV.	FILE NAME
1			4			A4	1.0	214A-11CAX_B_2

- △ Revise:
- △ Revise:
- △ Revise:

Schematic:



Notes:

Characteristion Description:

1. RJ45 10/100 POE Base-Tx Transformer Jack With Transformer Impedance Resistor/High Voltage Capacitor.
2. Size Same As RJ-45 Modular Jack To Save PCB Space.
3. Reduce EMI Radiation, Improve EMI Performance.
4. Designed For Network Interface Card Application.
5. Designed To Meet IEEE 802.3u Requirement.
6. Designed For 100 POE Base Transmission over UTP-5 Cable.

Electrical Specifications:

1. Inductance At 100 KHz, 100 mV 8mADC Bias: 350 uH Min.
2. Leakage Inductance 0.3 uH Max. @100KHz 100mV
3. Insertion Loss: 1.1 dB Max. @ 1-100 MHz
4. Return Loss:
 - 18dB Min. @1-30MHz
 - 16dB Min. @ 30-60MHz
 - 12dB Min. @ 60-80MHz
5. Cross Talk: 1-100MHz 30dB Min.
6. Common Mode Rejection: 30dB Min. @1-100MHz
7. Isolation Voltage @60Hz:1500Vrms(Input To Output) 60 Seconds

10/100+POE

UNLESS OTHERWISE SPECIFIED TOLERANCE		
ANGLES	ANG.	±5°
LINEAR	0.	±0.3
	0.0	±0.25
	0.00	±0.20
SCALE	AS SHOWN	UNIT: mm
DRAWN	Willis	2014/07/14
CHECKED	Angel	2014/07/14
APPROVED	Ken	2014/07/14



www.attend.com.tw

Revise:										
Revise:										
Revise:										

DRAWN NAME:		RJ45 PoE Jack 10/100 Base With LED	
PRODUCT NO.	214A-11CAX	FILE NAME	214A-11CAX_B_2

REV.	DESCRIPTION	DATE	REV.	DESCRIPTION	DATE	SIZE	REV.	FILE NAME
1						A4	1.0	