

SWITCH CIRCUIT

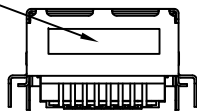
MATERIAL AND FINISH AS BELOW

A	Housing	LCP UL94V-0 Black	E
B	Contact	Phosphor Bronze C5191,Contact Area:Gold Plating	F
C	Shell	Brass C2680,Nickel Plating	G
D	Coil Box	Phenolic UL94V-0 Black	H

DATE CODE

YYWWXX
Year
Week

For coil factory
A:DongGuan Nuconn Industry CORP.
J:JiangXi Nuconn Industry CORP.
S:Vetok Electronic CORP.
For final production factory
A:DongGuan Nuconn Industry CORP.



PRODUCT NUMBER:
212A-11 C D 0-RA8
1 2 3

SPECIFICATION:

1. ELECTRICAL

- 1.1 Current Rating: 750mA per pin
- 1.2 Voltage Rating: 57V DC per pin
- 1.3 Contact Resistance: 30mΩ
- 1.4 Insulation Resistance: 1000MΩ
- 1.5 Dielectric Withstanding Voltage: 1500VAC/2250VDC

1.No. of Contact
11:1X1 Port

2.Contact Plating
C: 5u" Gold Plating

3.EMI Tab
D:Middle Mount
without EMI Tab

2. MECHANICAL

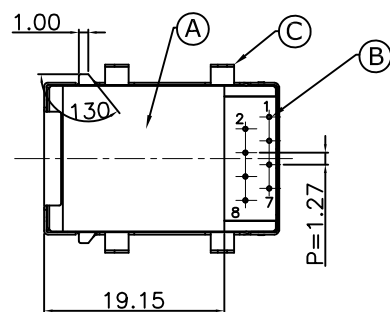
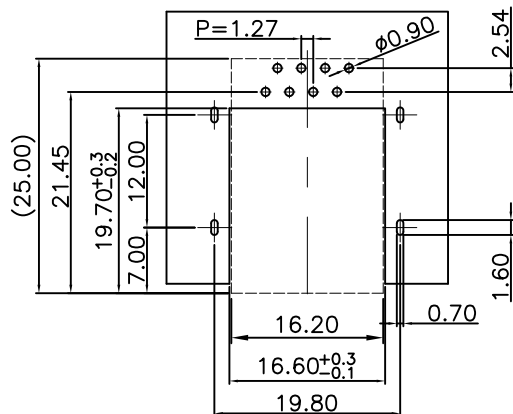
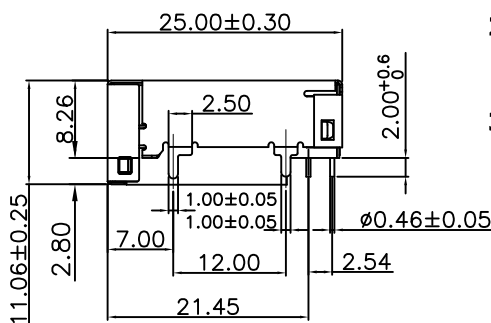
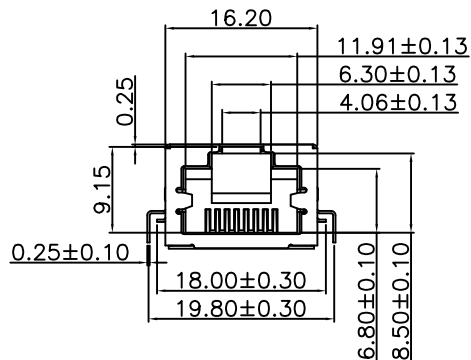
- 2.1 Durability: 1000 Cycle
- 2.2 Insertion Force: 22N max.
- 2.3 Extraction Force: 22N min.

3. ENVIRONMENTAL

- 3.1 Operating temperature range: 0°C~+85°C
- 3.2 Storage temperature range: -40°C~+85°C

4. SOLDER ABILITY

- 4.1 Recommended Wave Soldering Temperature: 260°C
- 4.2 Recommended PCB Thickness: 1.5mm



P1	P2	P3	P4	P5	P6	P7	P8	P9	P10	P11	P12
----	----	----	----	----	----	----	----	----	-----	-----	-----

PIN ASSIGNMENT

212A-11CD0-RA8	Middle Mount 2.8mm Magnetic Type, Contact Area:5u" Gold
PRODUCT NO.	DESCRIPTION

UNLESS OTHERWISE SPECIFIED TOLERANCE

ANGLES	ANG.	±5°
LINEAR	0.	±0.3
	0.0	±0.25
	0.00	±0.20

SCALE AS SHOWN UNIT: mm

DRAWN	Willis	2012/09/27
CHECKED	Angel	2012/09/27
APPROVED	Ken	2012/09/27



www.attend.com.tw

DRAWN NAME:
RJ45 Jack Middle Mount Magnetic Type
10/100 Base-T

PRODUCT NO. 212A-11CD0-RA8

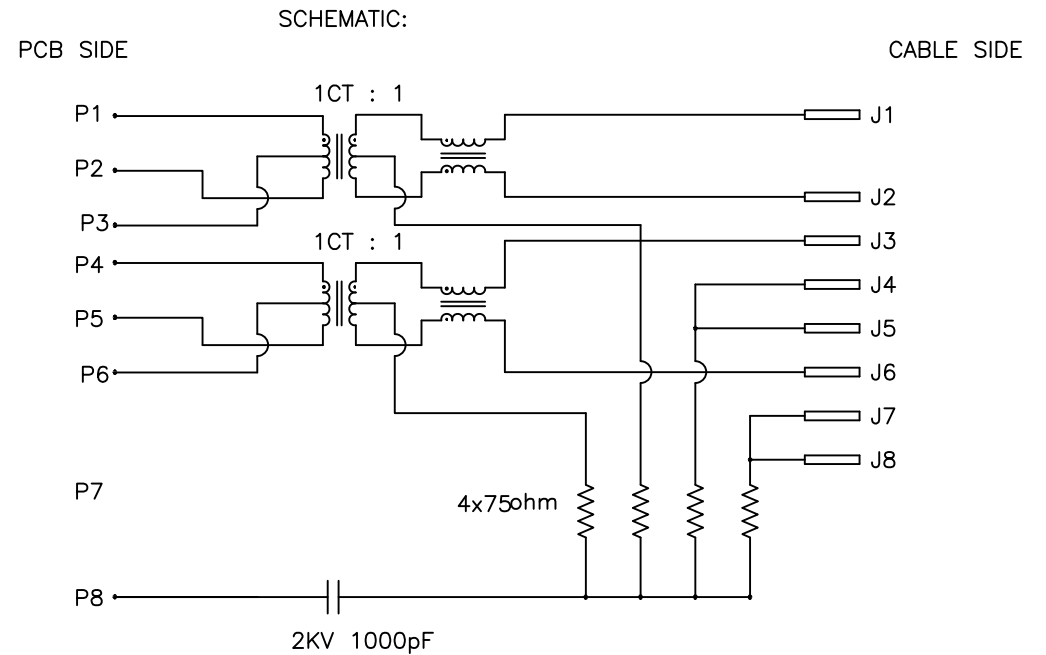
Revise:

Revise:

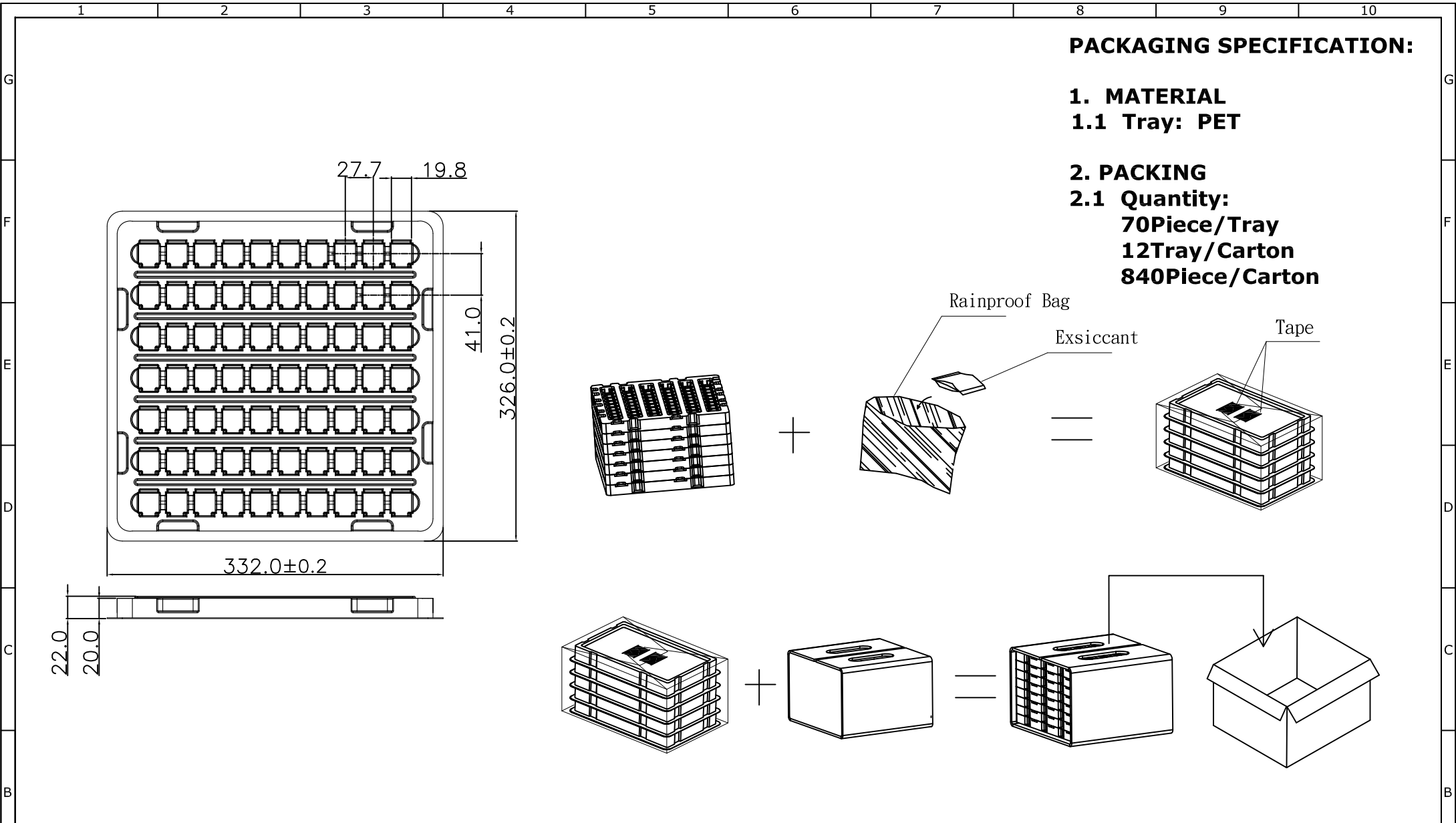
Revise:

REV.	DESCRIPTION	DATE	REV.	DESCRIPTION	DATE	SIZE	REV.	FILE NAME
1						A4	1.0	212A-11CD0-RA8_B_1

1. Turns Ratio:(P1-P2):(J1-J2):1CT:1CT ±5%
(P4-P5):(J3-J6):1CT:1CT ±5%
2. Inductance:(P1-P2):350uH min. @0.1V,100kHz,8mA DC Bias
(P4-P5):350uH min. @0.1V,100kHz,8mA DC Bias
3. leakage Inductance:
P1-P2(Short J1-J2):0.3uH MAX@1MHz
P4-P5(Short J3-J6):0.3uH MAX@1MHz
4. Interwinding Capacitance:
(P1,P2,P3) To (J1,J2):35pf MAX.@1MHz
(P4,P5,P6) To (J3,J6):35pf MAX.@1MHz
5. DC Resistance: (J1-J2) and (J3-J6):1.2 ohm Max
6. Return Loss:(P1-P2) and (P4-P5)@Load 100Ohm
1~30MHz:-18dB MIN
30~60MHz:-16dB MIN
60~80MHz:-12dB MIN
7. Hi-pot :(J1,J2)To (P1,P2,P3)1500VAC or 2250VDC 60sec@60Hz
(J3,J6) To (P4,P5,P6): 1500VAC or 2250VDC 60sec@60Hz
8. Insertion Loss:1~100 MHz:-1.0 dB MAX
9. Cross Talk:1~100 MHz:-30dB MIN
10. Common to Common Mode Rejection: 1~100MHz:-35dB MIN



				UNLESS OTHERWISE SPECIFIED TOLERANCE			 www.attend.com.tw		
ANGLES		ANG.	±5°	DRAWN		DRAWN NAME:			
LINEAR		0.	±0.3	CHECKED		RJ45 Jack Middle Mount Magnetic Type			
		0.00	±0.25	APPROVED		10/100 Base-T			
Revise:				SCALE	AS SHOWN	UNIT:	mm	PRODUCT NO.	212A-11CD0-RA8
Revise:				DRAWN	Willis	2012/09/27		FILE NAME	212A-11CD0-RA8_B_1
Revise:				CHECKED	Angel	2012/09/27			
				APPROVED	Ken	2012/09/27			
REV.	DESCRIPTION	DATE	REV.	DESCRIPTION	DATE	SIZE	REV.	FILE NAME	
1			4			A4	1.0		



PACKAGING SPECIFICATION:

1. MATERIAL

1.1 Tray: PET

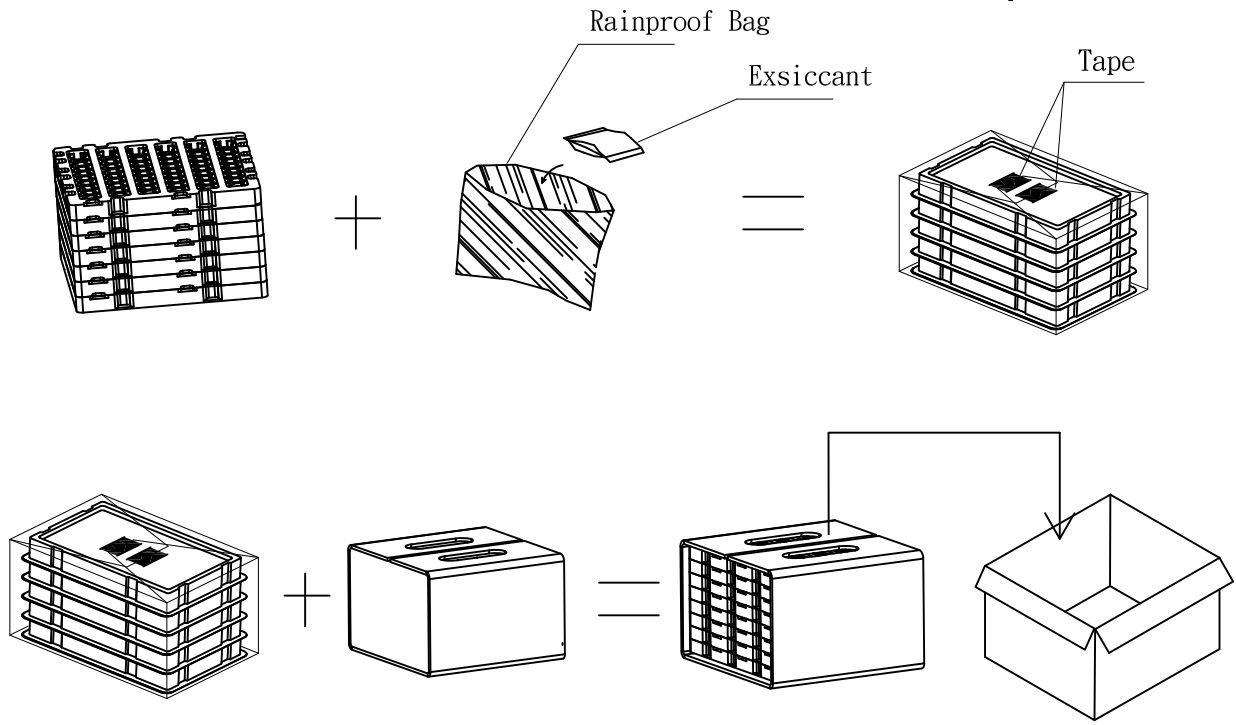
2. PACKING

2.1 Quantity:

70Piece/Tray

12Tray/Carton

840Piece/Carton



						UNLESS OTHERWISE SPECIFIED TOLERANCE			 www.attend.com.tw	
						ANGLES	ANG.	±5°		
						LINEAR	0.	±0.3		
							0.0	±0.25		
							0.00	±0.20		
						SCALE	AS SHOWN	UNIT: mm		
						DRAWN	Willis	2012/09/27	DRAWN NAME:	
						CHECKED	Angel	2012/09/27	RJ45 Jack Middle Mount Magnetic Type 10/100 Base-T	
						APPROVED	Ken	2012/09/27	PRODUCT NO. 212A-11CD0-RA8	
REV.	DESCRIPTION			DATE	REV.	DESCRIPTION			DATE	 SIZE A4 REV. 1.0 FILE NAME 212A-11CD0-RA8_D_1
1					4					9
2					5					10
3					6					
4					7					
5					8					
6					9					
7					10					

A

A

A

A

A

A