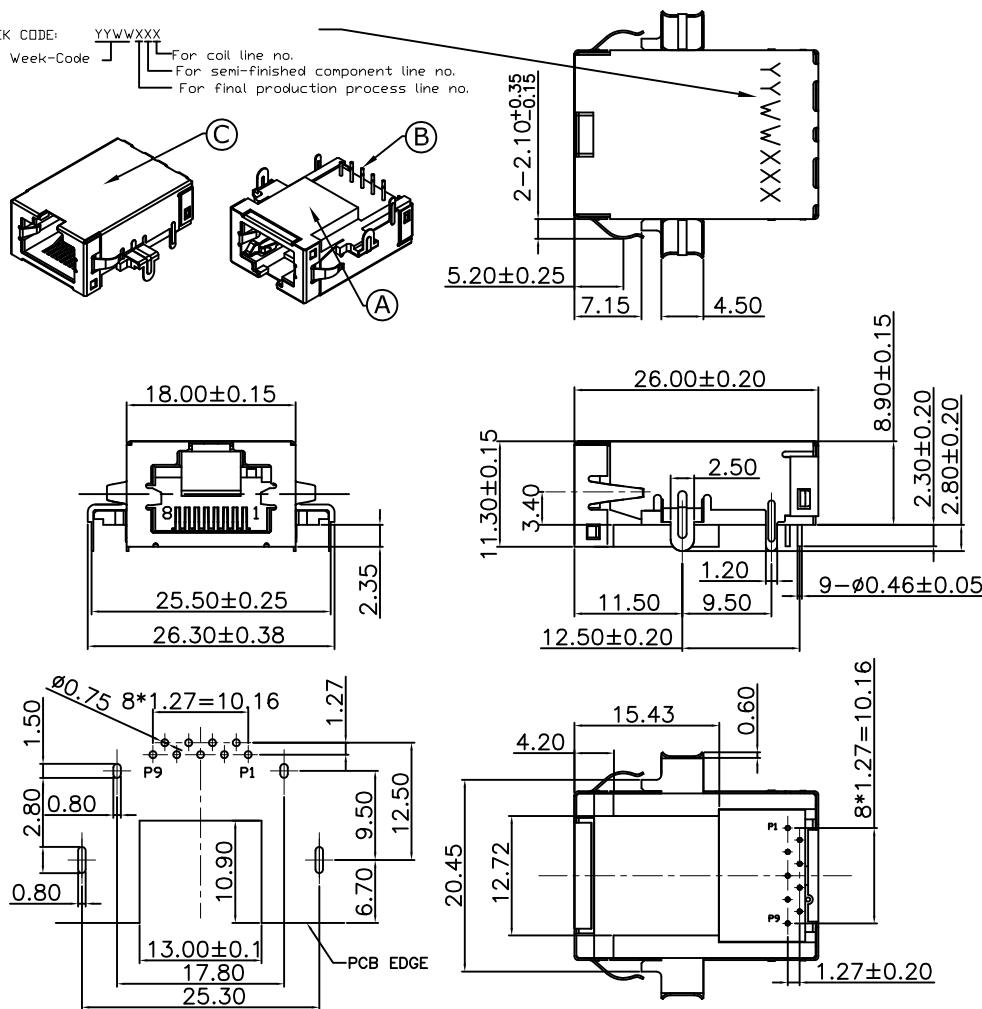


SWITCH CIRCUIT

MATERIAL AND FINISH AS BELOW

A	Housing	LCP UL94V-0 Black	E
B	Contact	Phosphor Bronze C5191,Contact Area:Gold Plating	F
C	Shell	Brass C2680,Nickel Plating	G
D	Coil Box	Phenolic UL94V-0 Black	H

WEEK CODE: YYWWXXX
 For Week-Code
 For coil line no.
 For semi-finished component line no.
 For final production process line no.



PRODUCT NUMBER:
212A-11 C C 0-RA7
1 2 3

SPECIFICATION:

1.No. of Contact
11:1X1 Port

2.Contact Plating
C: 5u" Gold Plating

3.EMI Tab
C:Middle mount with EMI Tab

1. ELECTRICAL

- 1.1 Current Rating: 350mA per pin
- 1.2 Voltage Rating: 57V DC per pin
- 1.3 Contact Resistance: 20mΩ
- 1.4 Insulation Resistance: 1000MΩ
- 1.5 Dielectric Withstanding Voltage: 150VAC/2250VDC

2. MECHANICAL

- 2.1 Durability: 1000 Cycle
- 2.2 Insertion Force: 35.6N max.
- 2.3 Extraction Force: 35.6N min.

3. ENVIRONMENTAL

- 3.1 Operating temperature range: -0°C~+70°C
- 3.2 Storage temperature range: -40°C~+85

4. SOLDER ABILITY

- 4.1 Recommended Wave Soldering Temperature: 260°C
- 4.2 Recommended PCB Thickness: 1.5mm

P1	P2	P3	P4	P5	P6	P7	P8	P9	P10	P11	P12
----	----	----	----	----	----	----	----	----	-----	-----	-----

PIN ASSIGNMENT

212A-11CC0-RA7 Middle Mount 2.35mm Magnetic Type, Contact Area:5u" Gold

PRODUCT NO. DESCRIPTION

UNLESS OTHERWISE SPECIFIED TOLERANCE		
ANGLES	ANG.	±5°
LINEAR	0.	±0.3
	0.0	±0.25
	0.00	±0.20
SCALE	AS SHOWN	UNIT: mm
DRAWN	Willis	2012/09/27
CHECKED	Angel	2012/09/27
APPROVED	Ken	2012/09/27



www.attend.com.tw

DRAWN NAME: RJ45 Jack Middle Mount Magnetic Type Gigabit

PRODUCT NO. 212A-11CC0-RA7

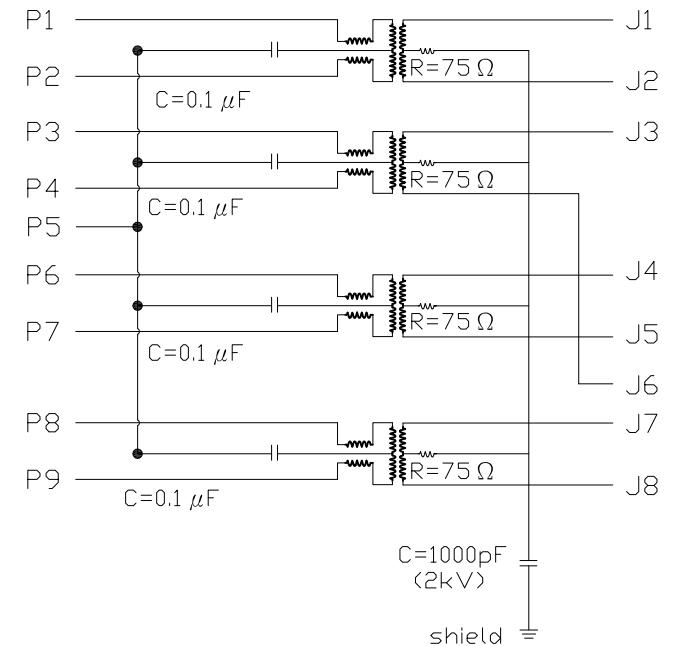
REV.	DESCRIPTION	DATE	REV.	DESCRIPTION	DATE	SIZE	REV.	FILE NAME
1						A4	1.0	212A-11CC0-RA7_B_1

DIELECTRIC: CUT OFF CURRENT 1mA MAXIMUM IN 2250 VDC or 1500 VAC/ 1 MINUTE

	TEST ITEM	FREQUENCY	SPECIFICATION REQUIREMENT (LIMIT)
1	Insertion Loss	0.1~1MHz	1.1 dB
		1~65MHz	0.5 dB
		65~100MHz	0.8 dB
		100~125MHz	1.2 dB
2	Return Loss	0.5~40MHz	18 dB
		40~100MHz	$12-20 * \text{LOG}_{10}(\text{MHz}/80)$ dB
3	CMRR	2~100MHz	$39-19.2 * \text{LOG}_{10}(\text{MHz}/50)$ dB
4	Common to Common Rejection	0.1~100MHz	30 dB
5	Cross-Talk Isolation	1~100MHz	$30-20 * \text{LOG}_{10}(\text{MHz}/100)$ dB

Chip Side

Cable Side



UNLESS OTHERWISE SPECIFIED TOLERANCE

ANGLES	ANG.	±5°
LINEAR	0.	±0.3
	0.0	±0.25
	0.00	±0.20
SCALE	AS SHOWN	UNIT: mm
DRAWN	Willis	2012/09/27
CHECKED	Angel	2012/09/27
APPROVED	Ken	2012/09/27



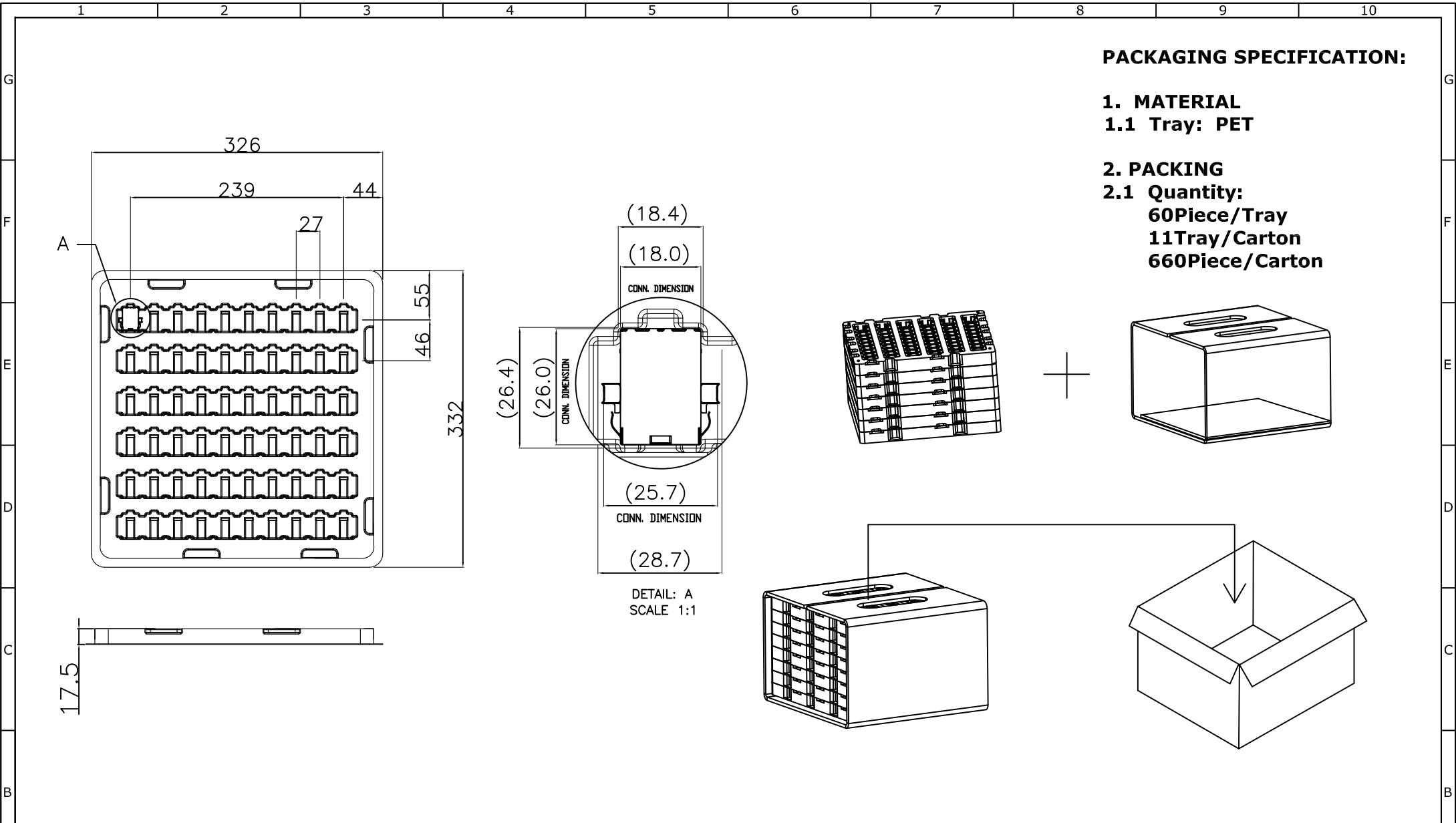
www.attend.com.tw

DRAWN NAME:
RJ45 Jack Middle Mount Magnetic Type Gigabit

PRODUCT NO. 212A-11CC0-RA7

FILE NAME 212A-11CC0-RA7_B_1

REV.	DESCRIPTION	DATE	REV.	DESCRIPTION	DATE	SIZE	REV.	FILE NAME
1			4			A4	1.0	212A-11CC0-RA7_B_1



PACKAGING SPECIFICATION:

1. MATERIAL

1.1 Tray: PET

2. PACKING

2.1 Quantity:

60Piece/Tray

11Tray/Carton

660Piece/Carton

						UNLESS OTHERWISE SPECIFIED TOLERANCE			 www.attend.com.tw	
						ANGLES	ANG.	±5°		
						LINEAR	0.	±0.3		
							0.00	±0.25		
						SCALE	AS SHOWN	UNIT: mm	±0.20	
						DRAWN	Willis	2012/09/27	DRAWN NAME:	
						CHECKED	Angel	2012/09/27	RJ45 Jack Middle Mount Magnetic Type Gigabit	
						APPROVED	Ken	2012/09/27	PRODUCT NO.	212A-11CC0-RA7
REV.	DESCRIPTION		DATE	REV.	DESCRIPTION		DATE	SIZE	REV.	FILE NAME
1				4				A4	1.0	212A-11CC0-RA7_D_1

A	△	Revise:								
	△	Revise:								
	△	Revise:								