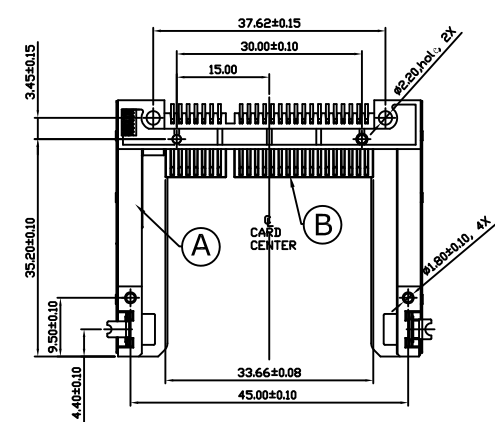
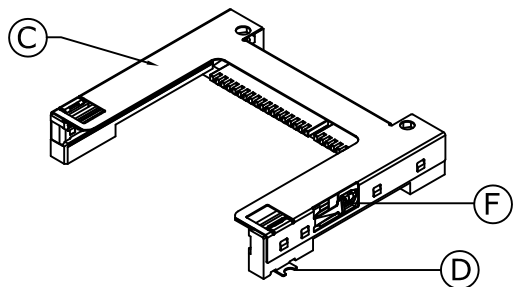
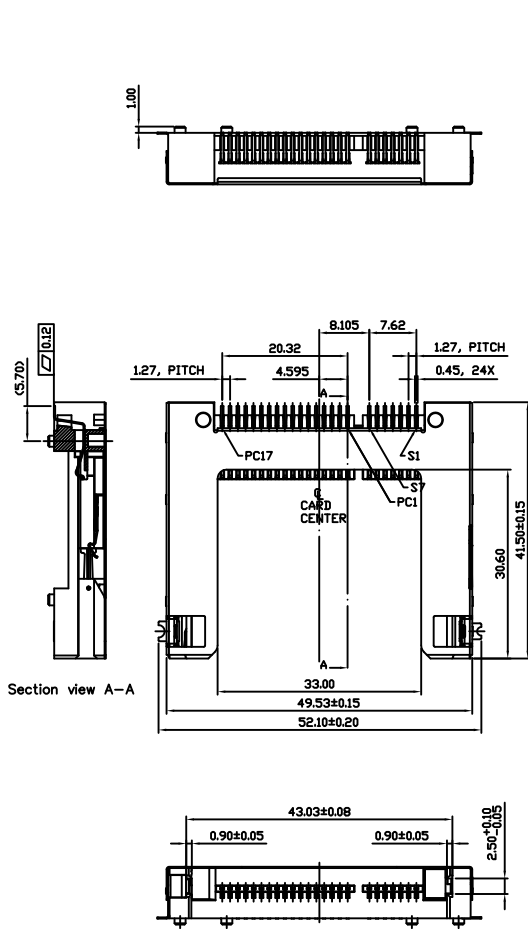


SWITCH CIRCUIT

MATERIAL AND FINISH AS BELOW

WHEN CARD IS EJECTED	WHEN CARD IS INSERTED

A	Housing	LCP UL94V-0 Black	E	Spring	Piano Wire
B	Contact	Phosphor Bronze C5210, 0.2t, 10u" Gold	F	Crank	Stainless Steel SUS304
C	Shell	Stainless Steel SUS304, 0.2t	G		
D	Hold down	Brass C2680, 0.2t, Tin Plating	H		



**SPECIFICATION:**

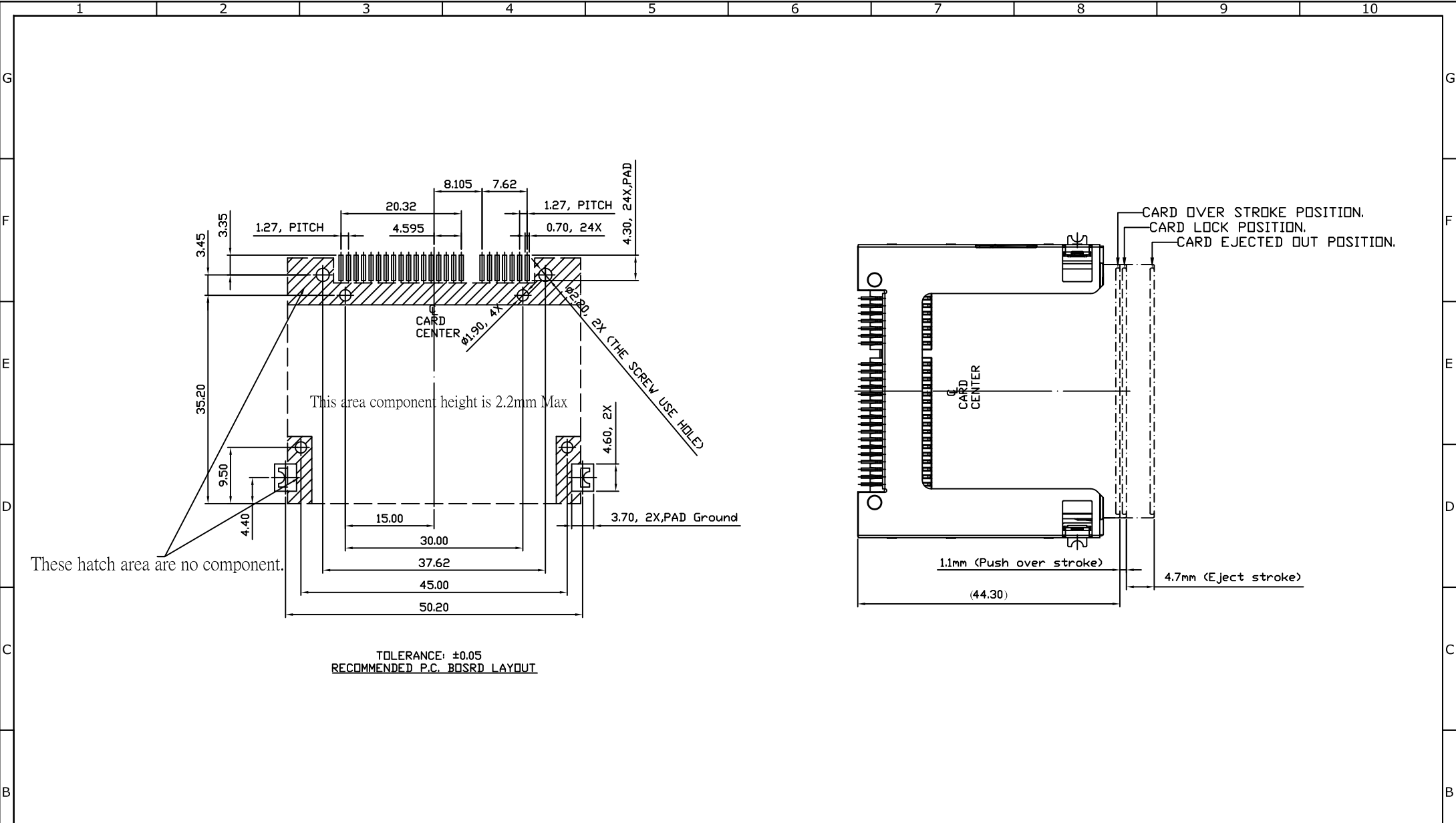
- 1. ELECTRICAL**
  - 1.1 Current Rating: 1.5A**
  - 1.2 Voltage Rating: 100V AC/DC**
  - 1.3 Contact Resistance: 30mΩ**
  - 1.4 Insulation Resistance: 1000MΩ**
  - 1.5 Dielectric Withstanding Voltage: 500VDC**
- 2. MECHANICAL**
  - 2.1 Durability: 10000 Cycle**
  - 2.2 Insertion Force: 28.8N max.**
  - 2.3 Extraction Force: 3.7N~24.5 max.**
- 3. ENVIRONMENTAL**
  - 3.1 Operating temperature range: -40°C~+85°C**
  - 3.2 Storage temperature range: -40°C~+85°C**
- 4. SOLDER ABILITY**
  - 4.1 Recommended IR Reflow Temperature: 260°C**

P1	P2	P3	P4	P5	P6	P7	P8	P9	P10	P11	P12
PIN ASSIGNMENT											
PRODUCT NO.		DESCRIPTION									
120C-835D00		Height8.35, Push-Push TypeII, Contact area 10u" Gold									

UNLESS OTHERWISE SPECIFIED TOLERANCE		SCALE AS SHOWN		UNIT: mm	
ANGLES	ANG.	±5°			
LINEAR	0.	±0.3			
	0.0	±0.25			
	0.00	±0.20			
DRAWN	Willis	2013/05/07		DRAWN NAME:	
CHECKED	Angel	2013/05/07		CFAST Socket	
APPROVED	Ken	2013/05/07		8.35H Push-Push TypeII	
REV.				PRODUCT NO.	120C-835D00
				FILE NAME	120C-835D00_B_2



www.attend.com.tw



These hatch area are no component.

TOLERANCE: ±0.05  
RECOMMENDED P.C. BOARD LAYOUT

						UNLESS OTHERWISE SPECIFIED TOLERANCE			 www.attend.com.tw	
						ANGLES	ANG.	±5°		
						LINEAR	0.	±0.3		
							0.00	±0.20		
						SCALE	AS SHOWN	UNIT: mm	DRAWN NAME: CFAST Socket 8.35H Push-Push TypeII	
A						DRAWN	Willis	2013/05/07	PRODUCT NO. 120C-835D00	
A						CHECKED	Angel	2013/05/07	FILE NAME 120C-835D00_B_2	
A						APPROVED	Ken	2013/05/07		
REV.	DESCRIPTION		DATE	REV.	DESCRIPTION		DATE	SIZE A4	REV. 1.0	
1				4						